

**Interreg  
Europe**



European Union | European Regional Development Fund



*Sharing solutions  
for better regional policies*

**Europe-Spain, let's cooperate!**

**2<sup>nd</sup> INTERREG EUROPE national event. 2<sup>nd</sup> Call**

# Lessons learnt

**Moisés Blanco**

National Representative  
MBlanco@sepg.minhap.es

**M<sup>a</sup> Teresa Tello**

National Representative  
MTTello@sepg.minhap.es

**Jasón Martínez**

Policy Officer | Interreg Europe JS  
j.Martinez@interregeurope.eu



**14 April 2016 | Info Day in Madrid**

# Summary



- **Few points about application**
- **About assessment**
- **Lessons learnt from the first call**



# ON APPLICATION



# Recommendations for applicants

- Read the programme manual and check assessment criteria
- Start from your need
- Be specific, make sure the topic addressed is focused and reflected in the policy instruments
- Take the learning process seriously
- First activities, then budget planning
- Communication serves your project

# In the application form



## Policy instruments

### B.2.1 Policy instrument 1

#### B.2.1.1 Definition and Context

##### Definition

Please name the policy instrument addressed

Please describe the main features of this policy instrument (e.g. objective, characteristics, priority or measure concerned) and the reason(s) why it should be improved.

Is this policy instrument a Structural Funds operational programme (i.e. Investment for growth and jobs or European territorial cooperation programme)?

Please select



# In the application form



## Territorial context

### B.2.1 Policy instrument 1

#### B.2.1.1 Definition and Context

#### Territorial context

What is the geographical coverage of this policy instrument?

Please select



What is the state of play of the issue addressed by this policy instrument in the territory? What needs to be improved in the territorial situation?

Is this issue linked to the regional innovation strategy for smart specialisation (RIS3)?

Please select



# In the application form



## Detailed description of activities in D.1

### D.1 PHASE 1 'Interregional learning' - Detailed work plan per period

Semester 1	Semester 2	Semester 3	Semester 4
01/2016 - 06/2016	07/2016 - 12/2016	01/2017 - 06/2017	07/2017 - 12/2017

#### Semester 1

a) Exchange of experience 

Please describe in detail the period's activities and outputs related to exchange of experience

b) Communication and dissemination

Please describe in detail the period's activities and outputs related to exchange of experience. Specify the responsibilities of each partner with regard to the activities and also add information on the involvement of local stakeholder groups.

activities and outputs related to communication and dissemination

c) Project management 

Please describe in detail the period's activities and outputs related to management and coordination

Main Outputs

Please describe in detail the outputs

# In the application form



## C4: objectives, target groups and activities

### D1: Workplan per semester

Home > C.1 - C.5 Project Description

C.7 Horizontal principles | C.8 Management | D.1 Phase 1 | D.2 Phase 2 | E Project budget | Overview and submit

A Project Summary | B.1 Partners | B.2 Policy Instruments | **C.1 - C.5 Project Description** | C.6 Expected results and outputs

Save | Check

**Overall objective and sub-objectives**

Describe the overall objective of the project.

0 / 1,000 characters

**C.4 Communication strategy**

Describe the communication strategy and the way it will contribute to achieve the above mentioned project objectives.

0 / 1,000 characters

Objectives	Target group	Activities
<input type="text"/> 0 / 1,000 characters	<input type="text"/> 0 / 1,000 characters	<input type="text"/> 0 / 1,000 characters

Add Objective

No. of appearances in media (e.g. press)

No. of new visitors to project website since last reporting period





# ON ASSESSMENT

# Selection procedure



## 2-step procedure

- I. eligibility assessment  
fulfilment of technical requirements
- II. quality assessment  
2 step qualitative evaluation

Detailed description in the programme manual (§5.3):

# Eligibility principles



- Technical **yes** or **no** process
- **No correction possible**
- Only eligible applications are further assessed

# Is your answer 'yes'?



- Is your application complete (application summary, partner declarations, support letters)?
- Is the application filled in according to instructions?
- Is it in English?
- Are all partner declarations:
  - Signed and dated
  - With name of partner identical to application form
  - With stated amount covering **at least** the amount of partner contribution
  - With no amendments to the standard text

# Is your answer 'yes'?



- Are all support letters:
  - Attached to the application form
  - Signed and dated by relevant organisation (check the country-specific list!!)
  - With name of partner(s) identical to application form
  - With no amendments to the standard text
- Are at least 3 countries of which 2 are EU members involved and financed by Interreg Europe?
- Is half of the policy instruments related to Structural Funds?

# Quality assessment



2nd step for eligible applications

## 2-step approach

1. strategic assessment
2. operational assessment

Scoring system (0-5)

Decision by monitoring committee

# Strategic assessment



Criterion 1: Relevance of proposal

Criterion 2: Quality of results

Criterion 3: Quality of partnership

Only projects reaching **at least** an adequate level ( $\geq 3.00$ ) are further assessed for operational criteria.

# Operational assessment



Criterion 4: Coherence of proposal & quality of approach

Criterion 5: Quality of management

Criterion 6: Budget and finance

Only projects reaching at least an **overall adequate** level ( $\geq 3.00$ ) are recommended for approval (with conditions) to the monitoring committee.





# Assessment provisional timing

May - June 2016	Eligibility check
June – October 2016	Quality assessment
End 2016	Decision & notification
Early 2017	Negotiation of conditions
Early 2017	Effective start date of projects



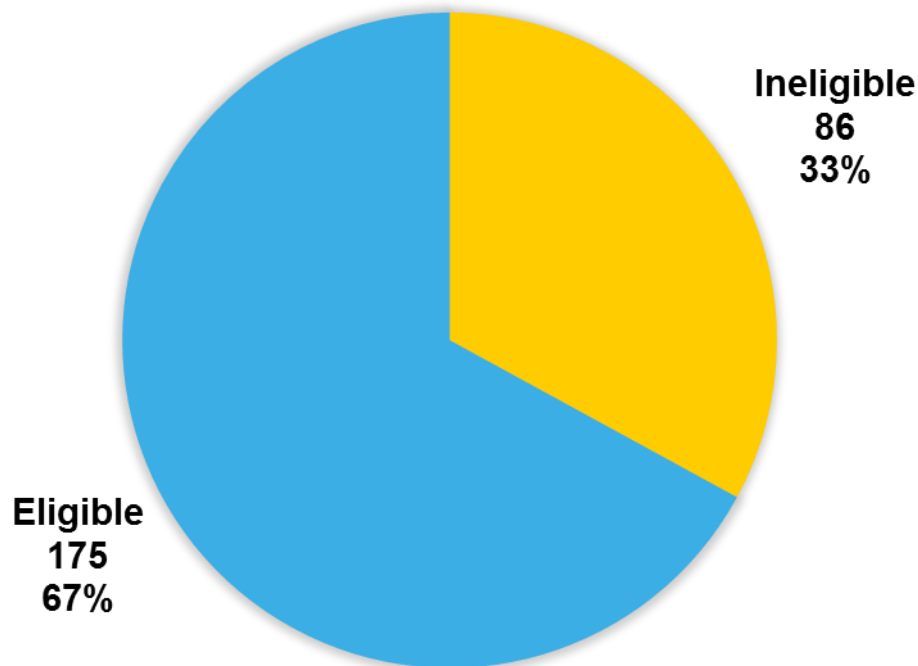
# LESSONS LEARNT



### Eligibility criteria

1. Respect of deadline	Is the application online submitted in due time?
2. Completeness of the application	Is the application complete?
3. Correctness of the application form	Is the application form fully and properly filled in according to the instructions?
4. Correctness of the partner declaration	Are the partner declarations correct?
5. Correctness of the support letter	If applicable, are the letters of support correct?
6. Geographical coverage	Does the project involve partners from at least three countries, of which at least two partners are from EU Member States and are financed by the Interreg Europe programme?
7. Focus on Structural Funds	Are at least half of the policy instruments addressed by the EU regions represented in the project Structural Funds programmes?

# Eligibility



## 7 eligibility criteria

- Criterion 1: Correct submission
- Criterion 2: Application complete
- Criterion 3: Application fully filled in
- Criterion 4: Partner declaration correct
- Criterion 5: Support letter correct
- Criterion 6: Minimum number of countries
- Criterion 7 50% SF

**All** to be fulfilled to be eligible!

Number of failed criteria	Number of projects
1 criterion	63
2 criteria	14
3 criteria	8
4 criteria	1

# Eligibility



- High rate of ineligibility (33%)
- Main cause of ineligibility: letters of support and partner declaration (missing or incorrect)

**Make sure all documents are provided and correct.**

**Don't prepare them at the last minute.**



# Ineligibility criteria per country

Not in the list (72)

Letter of support missing (48)

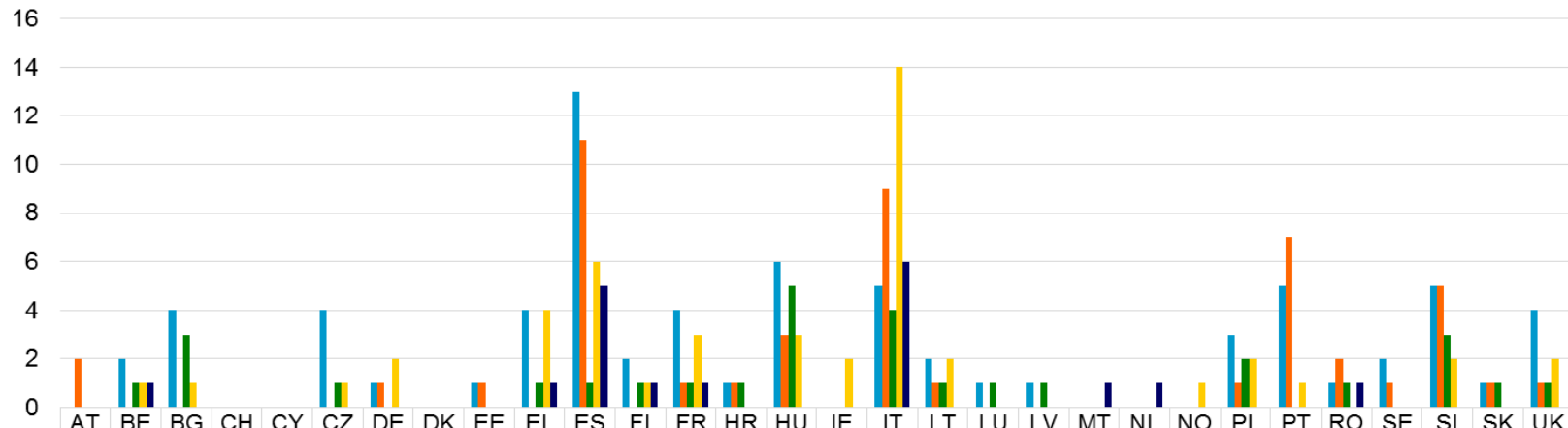
Partner declaration incorrect (48)

Application problem (18)

[www.interregeurope.eu](http://www.interregeurope.eu)



Eligibility problems per country



	AT	BE	BG	CH	CY	CZ	DE	DK	EE	EL	ES	FI	FR	HR	HU	IE	IT	LT	LU	LV	MT	NL	NO	PL	PT	RO	SE	SI	SK	UK
Not in the list		2	4			4	1		1	4	13	2	4	1	6		5	2	1	1				3	5	1	2	5	1	4
LoS missing	2						1		1		11		1	1	3		9	1						1	7	2	1	5	1	1
LoS incorrect		1	3			1				1	1	1	1	1	5		4	1	1	1				2		1		3	1	1
Partner declaration incorrect		1	1			1	2			4	6	1	3		3	2	14	2					1	2	1			2		2
Application problem		1								1	5	1	1				6				1	1				1				



# In my country

Choose a country to explore.

Delve into this map of Europe to discover Interreg Europe in each country. You will find details of the programme's point of contact per country, as well as the latest profiles, ideas and events in the area. This is also where you can find information on the administrative set-up in each country: who is responsible for Structural Funds programmes, what system of first level control applies and any other country-specific information.

Pick a country Spain

**Spain (España)**  
[Go to Spain \(España\) Page](#)  
**Project ideas: 47**  
**Partners: 647**

María Teresa Tello Naya  
✉ [Send me an email](#)  
☎ +34 91 5835339 / 554

Map labels: Greenland, Finland, Belarus, Ukraine, Russia, Hudson Bay, Northwestern Passages, MB, NL, ON, QC, SI.




## Country-specific information

### Bodies responsible for Structural Funds programmes

### First level control information

You can find here the lists of the managing authorities and/or intermediate bodies of Investment for Growth and Jobs programmes and European Territorial Cooperation programmes. If policies under these programmes are addressed by a project, we would expect the relevant organisation to be partner. If they are not partners, the relevant organisation must sign the letter of support submitted with the project application.

- 
- [2016-03-21\\_Investment-growth-jobs\\_ES.xls](#)  
Managing authorities and Intermediate Bodies of Investment for Growth and Jobs programmes
  - [Goal 2\\_ETC\\_MAs](#)  
Managing authorities of European Territorial Cooperation programmes

SHARE







Excel ribbon showing FILE, HOME, INSERT, PAGE LAYOUT, FORMULAS, DATA, REVIEW, VIEW. Font settings: Arial, size 14. Alignment: Merge & Center. Styles: Normálina 2, Standard 2, Normal. Editing: AutoSum, Fill, Clear, Sort & Filter, Find & Select.

A1 SPAIN

**SPAIN**

**Investment for Growth and Jobs Programmes 2014-2020**

Organisation (national language)	Organisation (English)	Role (MA / IB)	Contact person	E-mail	Phone/Address	Level (national / regional)	Name of Operational Programme	TOs selected	Link
Dirección Gral. de Fondos Europeos, COMUNIDAD AUTÓNOMA DE ANDALUCÍA	General Directorate for European Funds, REGIONAL GOVERNMENT OF ANDALUCIA	MA	Patrioia Egullior Arranz	patricia.egullior@juntadeandalucia.es	C/Juan Antonio de Vizarrón, s/n. Edif. Torretiana, Isla de la Cartuja 41092 · Sevilla; phone: +34 955065015	Regional	ERDF Regional Operational Programme Andalucía	All	<a href="http://www.juntadeandalucia.es/organismo/economia/novaciencia/empleo.html">www.juntadeandalucia.es/organismo/economia/novaciencia/empleo.html</a>
Dirección Gral. de Presupuestos, COMUNIDAD AUTÓNOMA DE ARAGÓN	General Directorate for Budget, REGIONAL GOVERNMENT OF ARAGÓN	MA	Manuel Galochino	dg.pfp@aragon.es	Pza de los Sitios, 7 -4* 50071 ZARAGOZA; phone: +34 976714237	Regional	ERDF Regional Operational Programme Aragón	All	<a href="http://www.aragon.es/Departamentos/OrganismosPublicos/Departamentos/Hacienda/AdministracionPublica/AreaTematicas/FondosEuropeos?channelSelected=5e2a4ef3173a210VgnVCM1000002030003FRC">www.aragon.es/Departamentos/OrganismosPublicos/Departamentos/Hacienda/AdministracionPublica/AreaTematicas</a>
Departamento de Vertebración del Territorio, Movilidad y Vivienda, COMUNIDAD AUTÓNOMA DE ARAGÓN	Department of Civil Works, Mobility and Housing, REGIONAL GOVERNMENT OF ARAGÓN	MA	José Luis Soro Domingo	gabinetextmgy@aragon.es	Edificio Pignatelli; phone: +34 976713139/+34976713141 Pª María Agustín, 36 50071 Zaragoza (Zaragoza); phone:	Regional	ERDF Regional Operational Programme Aragón	All	<a href="http://www.aragon.es/Departamentos/OrganismosPublicos/Departamentos/Hacienda/AdministracionPublica/AreaTematicas">www.aragon.es/Departamentos/OrganismosPublicos/Departamentos/Hacienda/AdministracionPublica/AreaTematicas</a>
Departamento de Economía, Industria y Empleo, COMUNIDAD AUTÓNOMA DE ARAGÓN	Department of Economy, Industry and Employment, REGIONAL GOVERNMENT OF ARAGÓN	MA	Marta Gaston Menal	consejeraeconomia@aragon.es	Edificio Pignatelli Pª María Agustín 36 50071 Zaragoza (Zaragoza); phone: +34 976715466	Regional	ERDF Regional Operational Programme Aragón	All	<a href="http://www.aragon.es/Departamentos/OrganismosPublicos/Departamentos/Hacienda/AdministracionPublica/AreaTematicas">www.aragon.es/Departamentos/OrganismosPublicos/Departamentos/Hacienda/AdministracionPublica/AreaTematicas</a>
Dirección Gral de Presupuestos, COMUNIDAD AUTÓNOMA DE ASTURIAS	General Directorate for Budget, REGIONAL GOVERNMENT OF ASTURIAS	MA	Fco. J Sánchez Fernández	dgpresupuestos@asturias.org	C/Hermanos Menéndez Pidal, 7 - 3, 5ª planta; +34 985105458/57 33005 OVIEDO;	Regional	ERDF Regional Operational Programme Asturias	All	<a href="http://www.asturias.es/portal/site/webasturias/menuitem.16d8fb00de818a6bd3d1843323000307?vgnextoid=68844fa08ad210VgnVCM1000002030003FRC&amp;vgnextchannel=da4561c85c974210VgnVCM1000002030003FRC&amp;cid=18n.html#oez">www.asturias.es/portal/site/webasturias/menuitem.16d8fb00de818a6bd3d1843323000307?vgnextoid=68844fa08ad210VgnVCM1000002030003FRC&amp;vgnextchannel=da4561c85c974210VgnVCM1000002030003FRC&amp;cid=18n.html#oez</a>
Dirección Gral. de Fondos Europeos, COMUNIDAD AUTÓNOMA DE BALEARES	General Directorate for European Funds, REGIONAL GOVERNMENT OF BALEARES	MA	Félix Pablo Pindado	fpablo@dgrfons.caib.es	Palau Reial, 17 - 1ª 07001 PALMA DE MALLORCA; PHONE: +34 971179328	Regional	ERDF Regional Operational Programme Baleares	All	<a href="http://www.caib.es/govern/organigramafar.ca.do?lang=ca&amp;coduo=6">www.caib.es/govern/organigramafar.ca.do?lang=ca&amp;coduo=6</a>
					Consejería de Economía y				

# Eligibility



Lessons learnt integrated in 2<sup>nd</sup> call application pack:

1/ Improved instructions in the application pack:

- Reformulation of the criteria and their meaning
- Warning messages included in different documents

2/ Full online application

- Compulsory documents to be uploaded on iOLF
- Project summary no longer necessary



# Quality: common weaknesses

## Criterion 1: Topic addressed

- Needs to be clearly in line with priority axes
- Needs to be focused and as specific as possible
- Needs to be reflected in **all policy instruments addressed**



# Quality: common weaknesses

## Criterion 1: Policy instruments

- Needs to be precisely defined (e.g. indication of the specific priority addressed)
- For Structural Funds: the instrument addressed needs to be the Operational / Cooperation programme itself



# Quality: common weaknesses

## Criterion 3: Policy relevance of partners

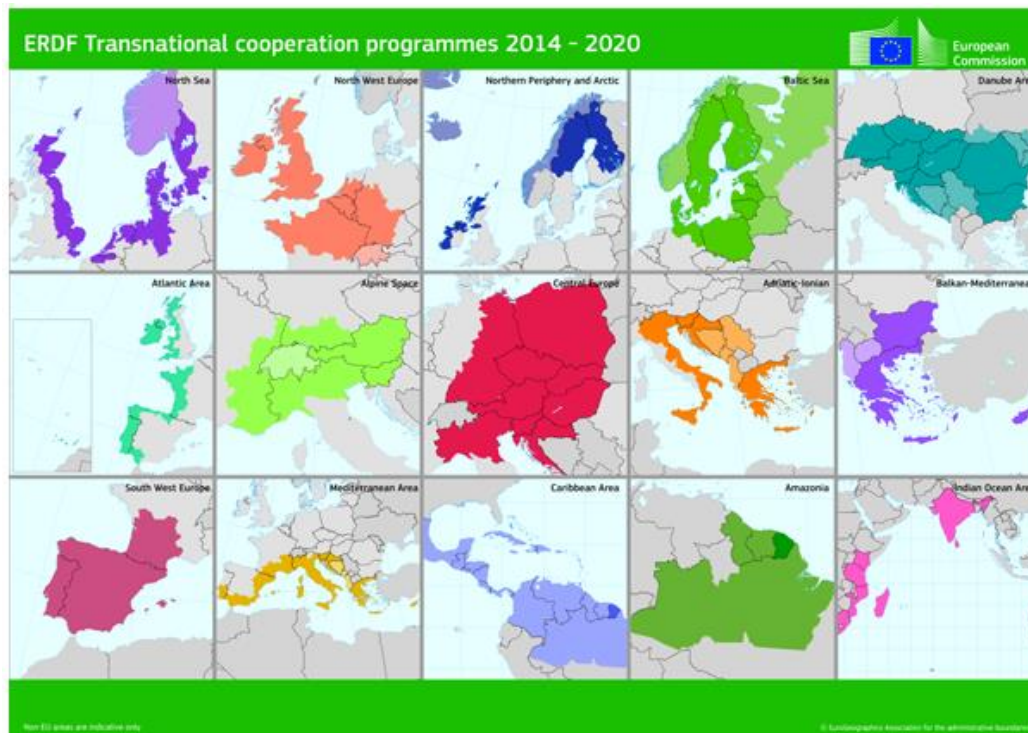
- **Policy relevance** = involvement of an organisation in the policy making process and capacity to influence to policy instrument
- Core elements of the quality of partnership (dedicated questions in section B.2 of the application form)
- Letter of support is **not** sufficient to demonstrate policy relevance of a partner



# Quality: common weaknesses

## Criterion 3: Geographical features

- Coverage: going beyond transnational area



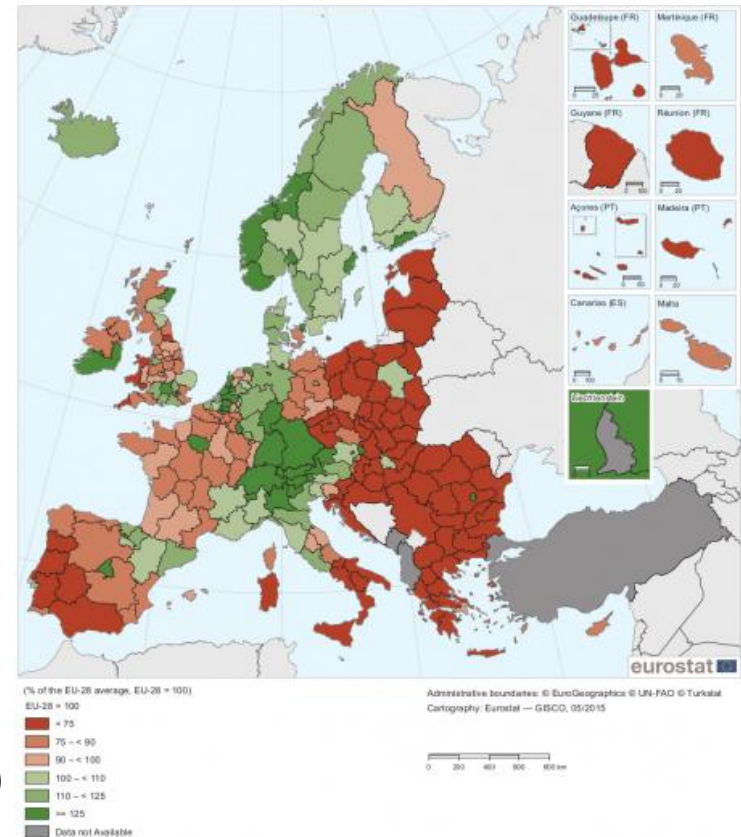
# Quality: clarification



## Criterion 3: mixing more and less developed regions (GDP)

### 'More and less developed regions', what does it mean?

The EC Cohesion policy aims at reducing disparities across regions in Europe. Interreg Europe contributes to this aim by encouraging regions with GDP per capita lower than 75% of the EU-28 average (less developed regions) to work with regions whose GDP per capita is higher (transition regions - GDP per capita between 75% and 90% of the EU-28 average - and more developed regions - GDP per capita above 90% of the EU-28 average). For more information, please check the [map](#) provided by the European Commission.



- Mix more and less developed regions (GDP)



# Quality: common weaknesses

## Criterion 3: multiple involvement

- Involvement in numerous applications is demanding and is not recommended
- Be strategic: select only the most relevant project(s) for your region
- Justify in case you are involved in several applications (section B.2 of the application form)





# Quality assessment: conclusion

## Importance of the application form

Fairness and equal treatment principles:

- Application Form = the only basis for assessment
  - same information requested from all
  - same technical requirements for all (e.g. text limits)
- Application form has to be self-explanatory
  - Additional information / clarification not possible after submission



# Frequent questions to the Spanish Contact Point

- **Carta de apoyo**
- **Instrumentos de política estructural en España**
- **Cuadro de Autoridades de gestión en España**
- **Elegibilidad socios/territorio elegible**
- **Localización de los términos de referencia**
- **Control de primer nivel**
- **Asesoramiento para mejorar idea de proyecto**
- **Financiación Plan de Acción**
- **Experiencias piloto**

# Useful links



## Programme manual

- [www.interregeurope.eu/help/programme-manual/](http://www.interregeurope.eu/help/programme-manual/)

## Application pack

- [www.interregeurope.eu/projects/apply-for-funding/](http://www.interregeurope.eu/projects/apply-for-funding/)

## Online application/ reporting system

- [www.iolf.eu/](http://www.iolf.eu/)

## Interreg Europe community

- [www.interregeurope.eu/account/dashboard/](http://www.interregeurope.eu/account/dashboard/)

Interreg  
Europe



European Union | European Regional Development Fund



*Sharing solutions  
for better regional policies*

Thank you!

Now, you have the floor



 GOBIERNO DE ESPAÑA	MINISTERIO DE HACIENDA Y ADMINISTRACIONES PÚBLICAS	SECRETARÍA DE ESTADO DE PRESUPUESTOS Y GASTOS
		DIRECCIÓN GENERAL DE FONDOS COMUNITARIOS

[www.interregeurope.eu](http://www.interregeurope.eu)



Interregeurope