

Una manera de hacer Europa



BUENAS PRÁCTICAS

Actuaciones Cofinanciadas

Creation of a new public space as a square above the park-and-ride facility. Quart de Poblet

**Programa Operativo
Plurirregional de España**

Año 2022

Fondo Europeo de Desarrollo Regional

Good Practice: CREATION OF A NEW PUBLIC SPACE AS A SQUARE ABOVE THE PARK-AND-RIDE FACILITY

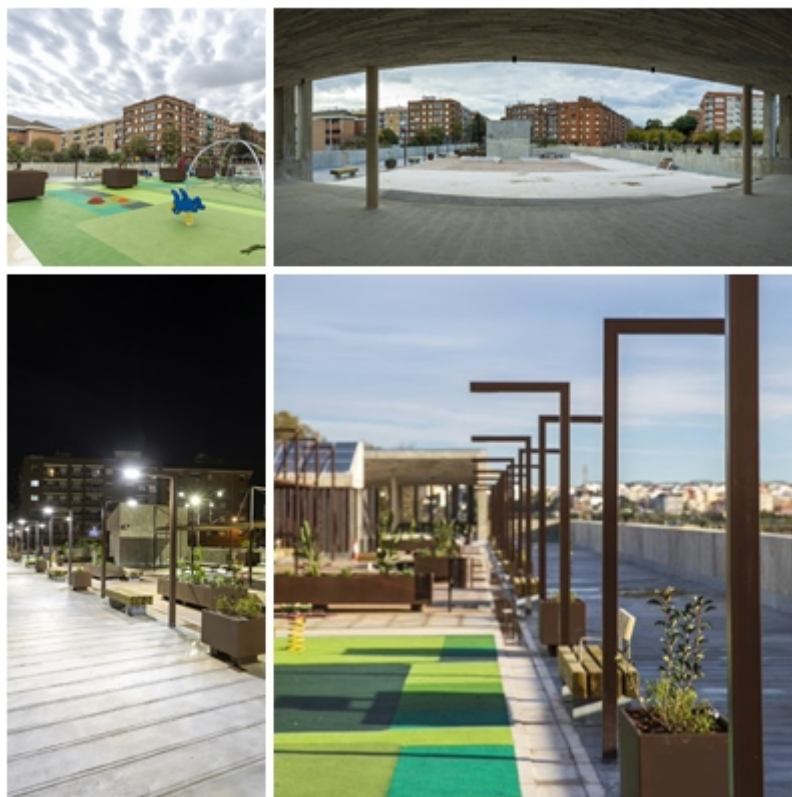
The good practice co-financed by the ERDF Fund consists of the creation of a new public space in the form of a square over a two-storey underground car park in Tribunal de las Aguas Street, next to Turia Natural Park. The project has enabled creation of a 2,892.14 square-metre recreational area for the use and enjoyment of the public. Together with the car park, it forms part of the global project “Balcó del Túria”.

This space has three distinct areas. The first one contains games for both children and the elderly, along with benches for carers keeping an eye on the little ones. The second area consists of a garden with aromatic plants and native Mediterranean species with marked walking paths, benches for resting and a shaded area built of bamboo cane. Lastly, a small multi-purpose amphitheatre has been built for various outdoor activities. In front of it is an area for skating, skateboarding and children’s cycling. Furthermore, as it is located next to the Turia riverbed, this space serves as a viewpoint overlooking the river park.

The intervention also extends to the final stretch of Tribunal de las Aguas Street, which has been adapted to provide safe access to the square. It also has new signage restricting traffic, which is only allowed to access the car park, along with planters and flower boxes to increase the vegetation.

The entire area is fully accessible and has also been fitted with litter bins, fountains, LED lights and tactile paving. In summary, a degraded, unused area has been converted into a pleasant, attractive, sustainable and public space.

The intervention has an eligible budget of €410,515.49, while European Regional Development Fund (ERDF) aid is €205,257.45. The operation will directly impact the Turia River neighbourhood’s population of 10,984 residents and more generally over 24,500 municipal residents.



PHOTOS OF THE NEW SQUARE

The criteria for identifying this intervention as a good practice are the following:

1. THE ERDF’S ROLE IN THE INTERVENTION WAS APPROPRIATELY CIRCULATED AMONGST POTENTIAL BENEFICIARIES AND THE GENERAL PUBLIC.

In order to publicise the intervention, the ERDF’s role in the operation was publicised widely, from the planning phase (prior to writing the project), during execution (works phase) through to inauguration and opening the space to residents.

In regards to regulatory communications, throughout the works phase an informatory notice of works was erected on site and once works were completed a permanent plaque was installed, as well as a specific section on the member state’s unique municipal web portal, notifying visitors of the ERDF’s co-financing.



SIGN AT THE WORKS



UNIQUE WEB PORTAL



PERMANENT PLAQUE

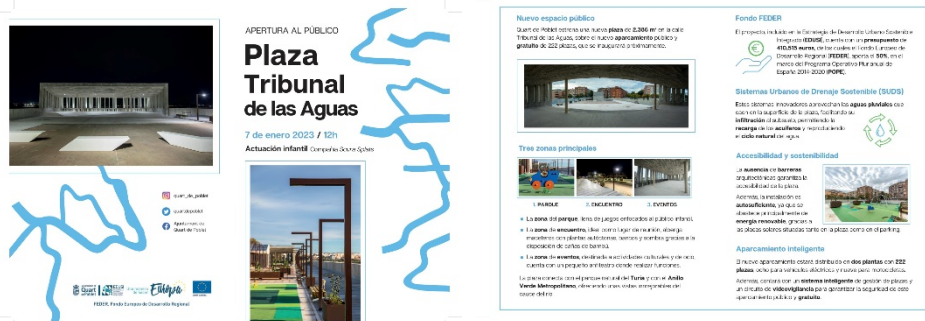
A public event was organised to publicise the project amongst the public. To attract citizens to the new space, a *Batucada* band began its performance at the beginning of Tribunal de las Aguas Street, where there is a busy roundabout. From that point, the *Batucada* walked to the rhythm of the drums along the aforementioned street to the new square. It thus attracted residents’ attention and they were led to the agora. Once there, the group continued its performance to the amphitheatre, where more and more spectators joined.

After attracting a large audience, the children’s show *Corral Kaos*, involving a cart, stilt walkers and a giant chicken, began. It started at the beginning of the square, moving around the square and stopping at the key areas. In this way, attendees of all ages walked around and got to know the new space to the rhythm of both shows. The event thereby achieved excellent attendance and impact. These two performances were chosen to emphasis that the agora has multiple uses and can be enjoyed by people of all ages.



PHOTOS OF THE SQUARE'S OPENING

Furthermore, to announce the opening, information leaflets were distributed through letterboxes and information lightboxes following the same graphic line were installed in the town's streets.



LEAFLET AND LIGHTBOX

Regarding the notices published in the printed press, we can highlight articles both in the provincial and autonomous region press, as well as on social networks (Facebook and Instagram). The provincial newspapers *Levante* and *Las Provincias* (the two with the largest circulation in the Valencian Community) published news on the project, its execution and opening. All of them provided information on the operation, co-financing and the ERDF's role in these. The following images are attached as an example:



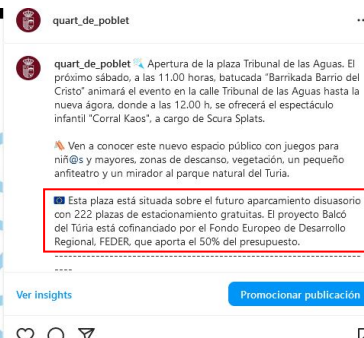
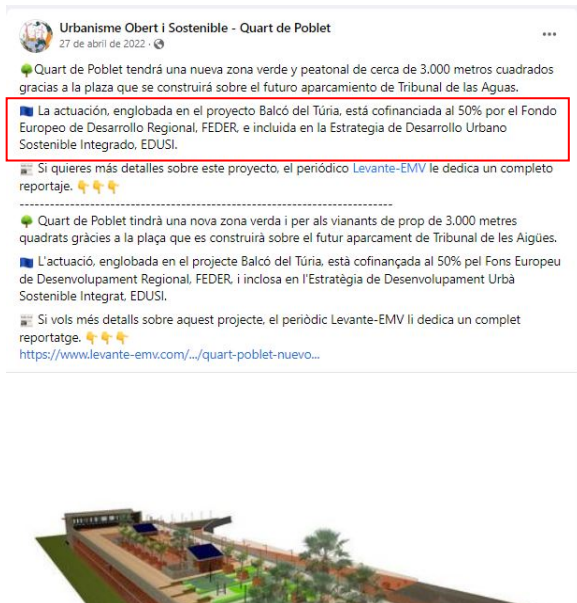
NEWS PUBLISHED IN THE LEVANTE AND LAS PROVINCIAS NEWSPAPERS

Meanwhile, news was also published in local and regional digital media such as *Valencia Plaza*, *El Periódico de Aquí*, *El Meridiano* and *El Periòdic*.



NEWS IN VALENCIA PLAZA AND EL MERIDIANO

In terms of social networks, dissemination was undertaken on the City Council’s Facebook profiles, both the municipal one and Urbanism and Environment (department in charge of the Sustainable and Integrated Urban Development Strategy, EDUSI). The municipal Instagram and Twitter profiles were also used.



POSTS ON FACEBOOK, INSTAGRAM AND TWITTER

2. THE INTERVENTION INCORPORATES INNOVATIVE ELEMENTS.

The project incorporates innovative elements that promote the sustainability of the whole. In this vein, the electric vehicle charging devices obtain their energy from the solar panels installed on the exterior canopies. Furthermore, the booths through which the car park is accessed will serve to supply energy to the entire facility, making it a 100% sustainable space.

Furthermore, the infrastructure includes the innovative Sustainable Urban Drainage Systems (SUDS), which prevent flooding in the event of heavy rainfall by harnessing rainwater. This method injects the water from the subsoil, conducting it to a lamination basin and thus ensuring its correct purification. It is a nature-based solution that recharges aquifers, reproducing the natural water cycle.

3. MATCHING RESULTS OBTAINED TO THE ESTABLISHED OBJECTIVES.

This action has achieved its main objective: to transform a degraded area into a large square for public use and to complement the new public car park, as the agora is located on its surface.

It has also succeeded in revitalising the area and contributing to the renewal of the Río Turia neighbourhood, providing it with a large open-air space with vegetation, benches, games and facilities for public use. It has also provided a direct connection to the Turia Natural Park, which bestows its name on the project.



BEFORE AND AFTER PHOTOS OF THE AREA

4. CONTRIBUTION TO RESOLVING A PROBLEM OR WEAKNESS DETECTED IN THE TERRITORIAL SCOPE OF WORKS.

The Río Turia neighbourhood had hardly any open-air spaces for neighbourhood gatherings or adequate green areas, so the new square will help to alleviate this lack. It was also possible to prevent the area's deterioration, aggravated by indiscriminate use of the area as a car park. It has also been possible to bridge the existing difference in level with the two floors of the car park and create an accessible surface with a parking space at ground level.

Inadequate connection with Turia Natural Park was another of the problems detected, as there was no adequate access to the riverbed. The metropolitan green ring starts from the square, connecting with the park entrance. This is a pedestrian and cycling lane linking Quart de Poblet with the municipalities of the Horta Sud county to promote sustainable mobility.

5. DEGREE OF COVERAGE OF THE POPULATION TOWARDS WHOM IT IS DIRECTED.

The interventions undertaken are confined to Quart de Poblet's Riu Turia neighbourhood, which has a high population density (10,984 inhabitants, in an area of barely 0.434 km²).

The degree of coverage is high, covering 100% of the neighbourhood population. The operation has a highly beneficial impact on the population most directly affected, which is approximately 10,984 people, but also on the other inhabitants of the town (approximately 24,500 inhabitants), because they can also use this space.

6. CONSIDERING THE HORIZONTAL CRITERIA OF EQUAL OPPORTUNITIES AND NON-DISCRIMINATION, ALONG WITH SOCIAL RESPONSIBILITY AND ENVIRONMENTAL SUSTAINABILITY.

The square project was conceived following the principle of universal accessibility, as it has been built without architectural barriers and at level zero from Tribunal de las Aguas Street. Furthermore, the benches and games have been designed in an inclusive way to be used by people with disabilities. It should be noted that routes have been fitted out with differentiated, non-slip paving to guide blind people. Furthermore there are handrails for support, which are likewise very useful for the elderly.

In terms of environmental sustainability, the luminaires are energy-saving LED lights to promote energy savings and ensure an efficient space, while underground containers have been installed at the entrance to facilitate recycling and prevent the area from becoming overcrowded with waste. To provide the agora with greenery, planters containing native Mediterranean species have been installed, while the shaded area has been roofed with bamboo canes from the river, thus strengthening links with the adjoining river park.

7. SYNERGIES WITH OTHER POLICIES OR INSTRUMENTS FOR PUBLIC INTERVENTION.

The intervention establishes synergies with other actions or public intervention policies. The most important of these is the free 222-space park-and-ride car park underneath the square. Furthermore, it is part of the Balcó del Túria project, to which the agora also belongs, so that both actions complement each other by transforming a degraded area and giving it a public use. It also houses the pedestrian access huts to the car park and contains the solar panels that supply electricity to the entire infrastructure.

The intervention also establishes synergies with the integral renovation plan of the Ríu Turia neighbourhood where the square is located, which has involved the redevelopment of the streets. The remodelling of roads has involved widening pavements, giving priority to pedestrians, increasing vegetation and providing new public infrastructures for an old district lacking in quality public services. The new area above the car park is one of the highlights of the neighbourhood's transformation, providing it with a sustainable, spacious and accessible meeting place for residents.

Lastly, the City Council is undertaking a campaign to promote Túria Natural Park and its enjoyment by the public. The square offers a connection to it, via the panoramic view that can be enjoyed from its location, along with a road for pedestrians and bikes linking it directly to the riverbed. In this way, the neighbourhood is integrated with and facilitates entrance to the river basin. Furthermore, it is complemented by another action co-financed by the ERDF: Puerta del Turia Park. This is located on the far side of the neighbourhood, and likewise establishes a new entrance to the river basin.

Una manera de hacer Europa



BUENAS PRÁCTICAS

Actuaciones Cofinanciadas

Fondo Europeo de Desarrollo Regional