



URBAN DEVELOPMENT IN THE EU

50 projects supported by ERDF during the 2007-13 period

AEIDL 2013

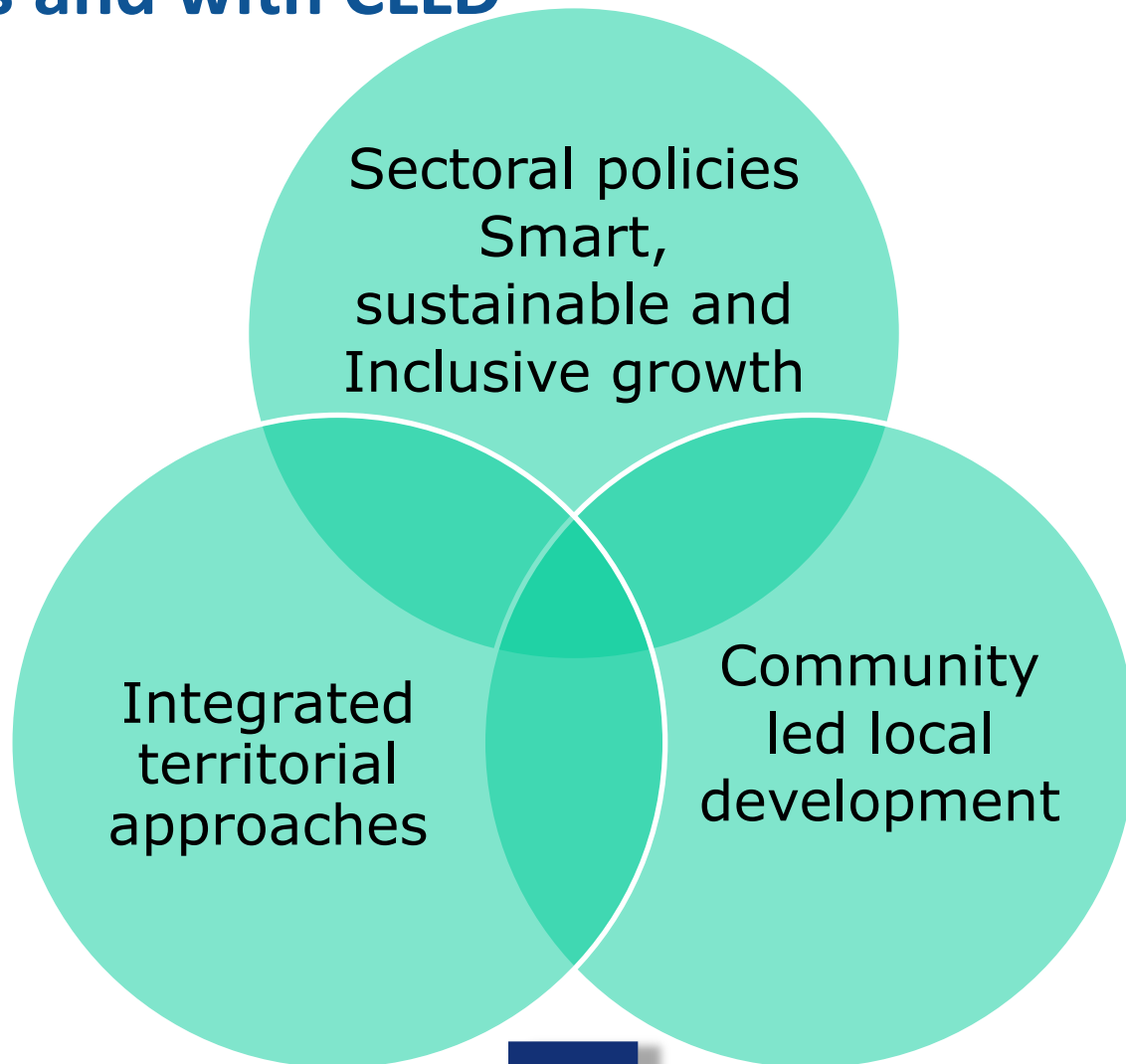
Peter Ramsden (Freiss ltd)

European Commission

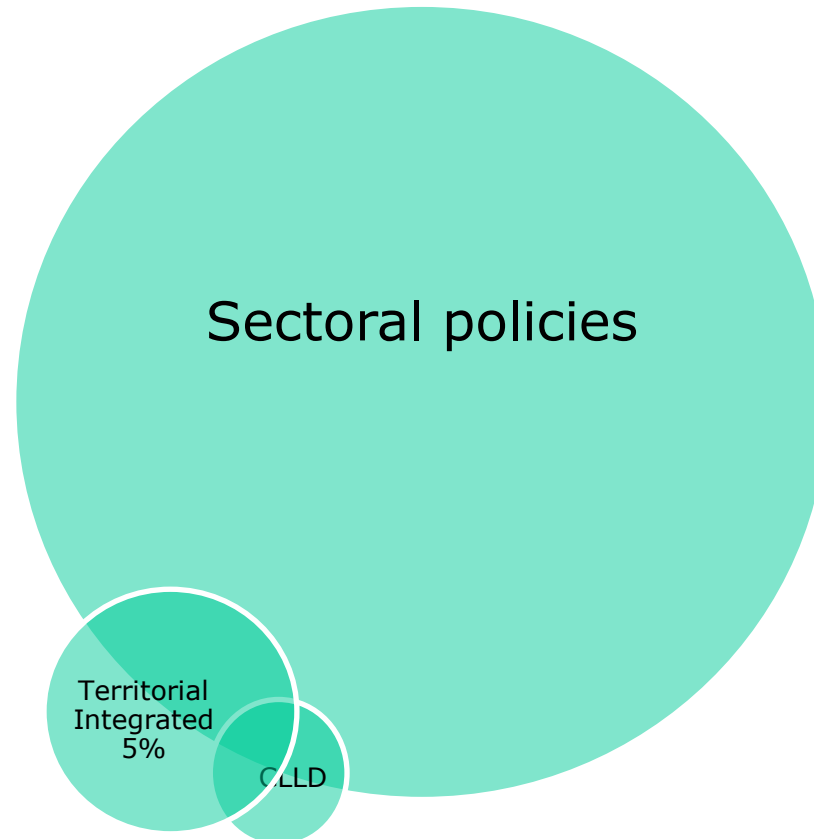
DG Regional and Urban Policy



Linking the integrated approach with sectoral policies and with CLLD



The football, the tennis ball and the disappearing table tennis ball



METHODOLOGY OF THE CASE STUDY APPROACH

- 360 approach, interviewing Users, Citizens, Funders, Policy makers, promoters, other stakeholders – asking: ‘what really happened?’
- Different products for different audiences – four line version, one page summaries, six page account, long template
- Produced by a local field expert working in national language and edited by a team



European
Commission

SELECTION OF CASES

A good spread of EU12 cases across the eight themes

- Balance among:
 - ✓ large and small/medium cities
 - ✓ competitiveness and convergence
- No city can appear more than once
- Minimum 4 per theme
- Iterative approach to selection involving MAs, COM, experts, studies



50 cases in 8 themes

- *Smart growth **
- *sustainable growth*
- *and inclusive growth*
- *Integrated approaches **
- *Use of the new housing provisions*
- *Financial engineering (Jessica etc) **
- *Participative approaches **
- *Cooperation (URBACT and INTERREG 4c)*

ISSUES IN THE 50 CASES STUDY

- Case studies are never 100% good practice, they are only ever ‘good in parts’
- You cannot copy and paste solutions for quality integrated approaches
- There are common lessons
- Case studies can become useful learning resources but they always need adapting when you transfer them

Smart Growth projects

SMART GROWTH		Project Summary	ERDF amount (€)
AT	Wien	Mingo: an incubator for start-up and growth SMEs	Phase 1: 645 625 Phase 2: 958 150
EE	Tallinn	The Cultural Cauldron: regeneration of industrial building for cultural centre and district (hotspot)	1 854 435
FR	Toulouse	The Oncopole: building for new science park based on medical cluster + soft actions for neighbourhood inclusion	10 900 000
HU	Pécs	Cultural capital investments	99 963 574
LT	Vilnius	Sunrise Valley: buildings for new science park, with a technology focus	194 500 000
NL	Eindhoven	The Automobile House: refurbishment of buildings and promotional activities for reorientation of existing science park	908 000
PL	Gdynia	Pomeranian Science and Technology Park: buildings for extension to science park and incubation centre with social innovation and cultural elements	35 000 000
SE	Stockholm	Kista Science City: networking for new focus in existing science park	570 000



Tallin, ES



Gdynia, PL

Gdynia innovation centre

- *Port city, new town, needing diversification*
- *First phase in former trolley bus garage/
WW2 aircraft factory*
- *Second phase newly built*
- *Linked to knowledge bases and SME fabric*
- *New intermediaries in service, product design
and prototyping (biotech, ICT, Env etc)*
- *New work on social innovation linking to civil
society – work on ageing, disadvantaged
housing estates*
- *Driven by leadership team in city council
(political and staff)*



ACHIEVEMENTS FOR SMART GROWTH



- High investments on **architectural design**, significant improvements in public space and the urban environment. Several regenerated **brownfield sites** (Gdynia, Tallinn); some of the sustainable growth examples are also smart!
- The Toulouse Oncopole supported activities to ensure that local residents have access to **employment, local firms to contracts** and open up local services to innovative ideas.

**SMART
GROWTH**

RECOMMENDATIONS FOR SMART GROWTH



- ERDF **smart growth** is aligned with **smart specialisation** strategies for their regions;
- Smart growth projects need to be based on solid market and viability studies, smart cities are not just about sensors but about smart citizens
- avoid large-scale science and technology developments which become **mono functional land-use developments** cut off from the wider city
- Physical investments should be planned and integrated with **soft measures**;
- The city can mobilise **triple and quadruple helix** approaches Knowledge centres, cities, businesses and citizens

**SMART
GROWTH**

INCLUSIVE GROWTH CASES

Country	City	Project title
BE	Kortrijk	SucceS
BU	Pazardzhik	A new vision for the city centre
CZ	Šumperk	we want to live and work like you
DE	Bremen	Robinsbalje – Bremen`s learning neighbourhood - centre with outreach educational project in poor neighbourhood
ES	Terrassa	Neighbourhood plan of District 2: working on migrant integration and community cohesion
FI	Tampere	Tampere Together: 18 grass roots mini projects
IE	Limerick	Limerick Development Partnership development of a former electrical factory for mixed community and business uses

Connecting urban regeneration with employment

Reach out to marginalized groups

Improve acceptance of disadvantaged people in the community

Provide training, educational measures and try to retain young people in school



Limerick, IR



Kortrijk, BE



Tampere, Fi



European
Commission

ACHIEVEMENTS FOR INCLUSIVE GROWTH



- The inclusive growth cases have the common goal of using **short-term impulses to create positive long-term impacts** (e.g. Limerick Enterprise Development Partnership);
- Besides employment rates, educational attainment figures and poverty reduction rates, the nature of inclusive growth **includes soft actions which require time in order for results to become visible.**

**INCLUSIVE
GROWTH**



European
Commission

RECOMMENDATIONS FOR INCLUSIVE GROWTH



- Cities need to foster **lively partnerships** which are crucial for the success of projects which deal with inclusive growth;
- effective working partnerships need to be animated by **skilled coordinators** to bring actors from different levels on board;
- The **third sector** is often a key partner in developing innovative projects for inclusive growth, and for cities to build long-term relationships with civil society organisations;
-

**INCLUSIVE
GROWTH**



CASE STUDIES OF INTEGRATED APPROACHES

Country	City	Project title
CY	Nicosia	Urban renewal of the historical city center (Taht-el-Kale)
DE	Duisburg	Integrated neighbourhood redevelopment in Marxloh
ES	Málaga	Iniciativa Urbana 'Arrabales-Carreteras'
FR	Saint-Nazaire	Urban social development of the Certé neighbourhood
FR	Ourcq – Seine-Saint-Denis	Territories Integrated Urban Programme (IUP), Seine-Saint-Denis
HU	Kazinc-barcika	Socially sensitive rehabilitation of Herbolya Old-Settlement
IT	Firenze	Rehabilitation of a former prison into multifunctional center for residence and cultural activities (Le Murate)

Building complex
in the city center

Neighbourhoods

Districts

Wider functional
area



Firenze, IT



Kazincbarcika, HU





ACHIEVEMENTS FOR the INTEGRATED APPROACH



- High level of integration especially in German and French projects;
- In-between in Hungarian and Spanish cases;
- Less integrated in Latvian and Cypriot cases;
- Results in improved quality of life in the neighbourhood and better life chances of the residents (better access to jobs, better education, better environment);
- More cohesion within the local community.

INTEGRATION

**Article 8 of
ERDF reg.**



RECOMMENDATIONS ON INTEGRATED APPROACHES



- Local problems can be only partially solved with an area-based approach, ERDF-funded projects could benefit from being part of broader **participative strategic planning on a wider scale**;
- ESF-type and ERDF-type actions should be brought together at national or regional level, so as **not to overburden the local level** with the challenge of combining funding to achieve integrated projects;
- **Long-term impacts of integrated approaches.** were the original problems displaced elsewhere in the city?

INTEGRATION

**ARTICLE 8 OF
ERDF**

FINANCIAL ENGINEERING CASES

	City	Project title
EE	Tartu	Kredex housing fund –pan Estonian Housing fund for converting former social facilities into social housing
PL	Poznan	Poznan Jessica urban development fund – a Jessica fund at regional level from the Wielkopolska convergence programme
UK	Sheffield	Yorkshire Key Fund – a social enterprise fund which is helping to move social enterprises from grants to loans
UK	London	The London Green Fund: a Jessica combining two funds, one focusing on waste management, the other on energy conservation and carbon reduction.

New ways to bring private sector finance

New types of financial model

Revolving funds

New Know how

ACHIEVEMENTS FOR FINANCIAL ENGINEERING

- Getting funds set up has been an achievement in its own right (overcoming regulatory obstacles, dealing with procurement and state aids)
- Some member states used Jessica to reach their N+2 targets (e.g. UK with London Green Fund)
- Estonian energy efficiency fund (Tartu case) has succeeded in making large numbers of investments
- Social investment in the first ERDF fund for social enterprise (UK Sheffield)



RECOMMENDATIONS FOR FINANCIAL ENGINEERING

- **Accelerate process to set up funds** to ensure that investments can be made within a reasonable period;
- **build capacities at all levels** to work with new financial engineering initiatives;
- Don't' reduce **transparency, partnership and participation** because of commercial confidentiality.
- make financial instruments operate as part of the integrated approach

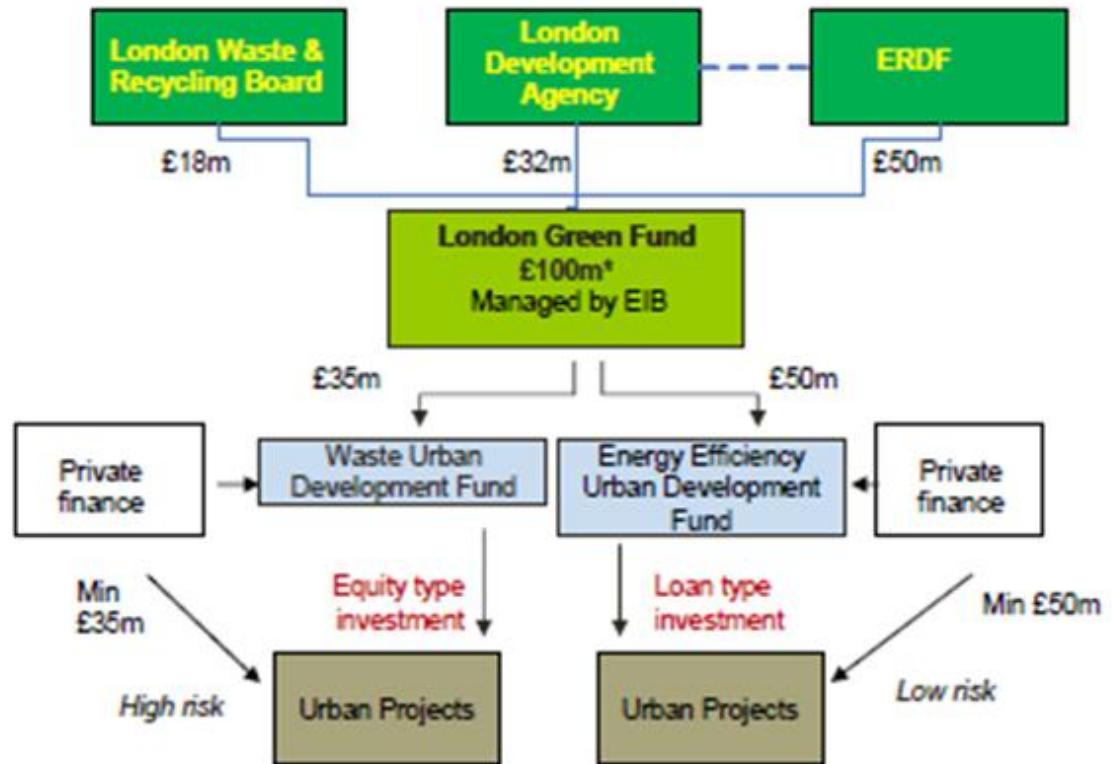
FINANCIAL

Engineering

RECOMMENDATIONS continued

- **Regional development banks could be an important vehicle for developing financial engineering models in the future and would bring the holding funds closer to the regions;**
- **Social and environmental actions can be incentivised as part of packages of JESSICA investments by using interest rate subsidies (e.g. as is possible in Poznań/Wielkopolska).**

The London Green Fund



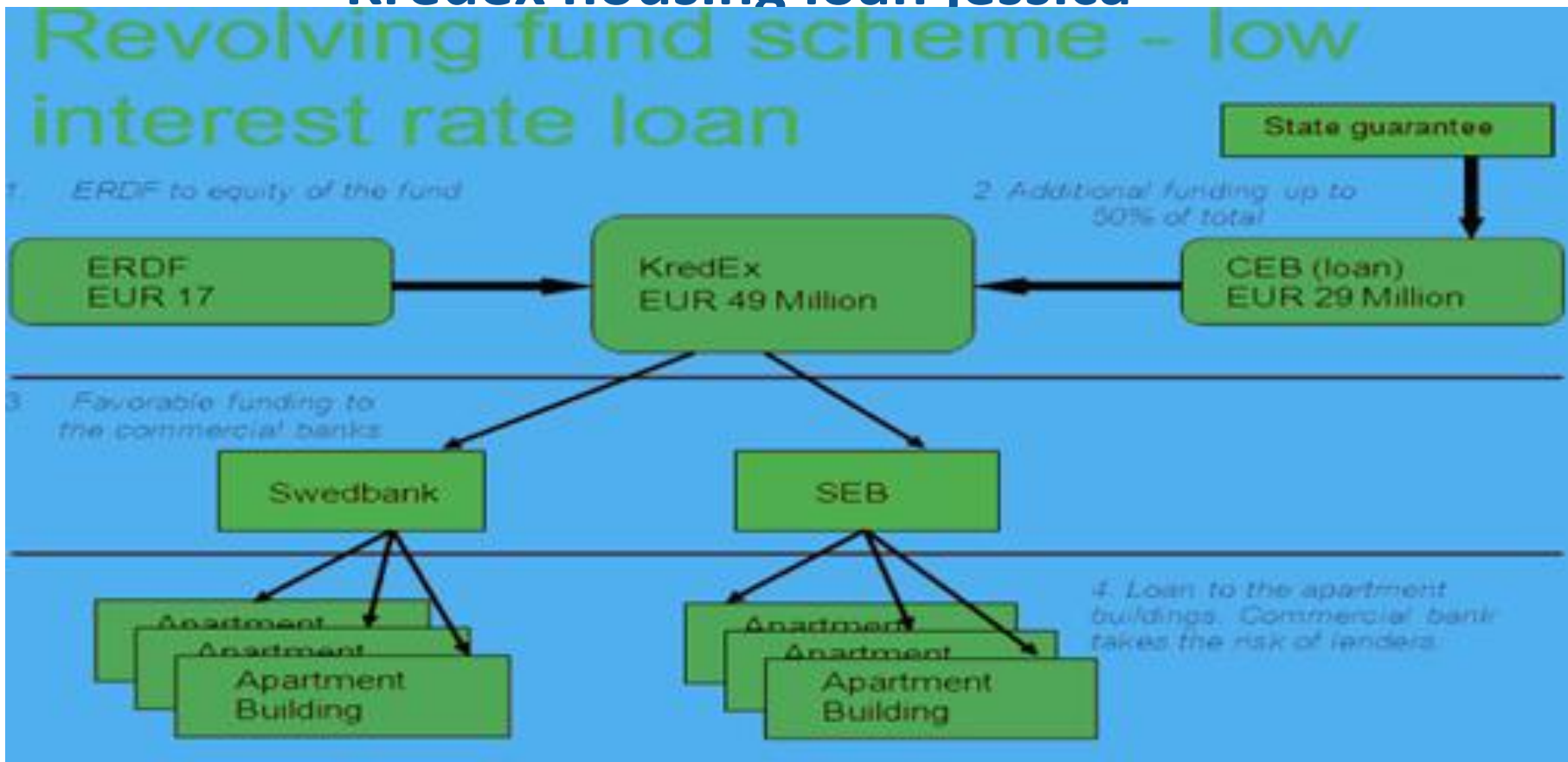
* The remaining £15m may, as an option, be invested in one or both UDFs in due course

The UK's first recycling facility for shopping bags and plastic films

24/09/2013

The UK's 1st recycling facility for shopping bags and plastic films

Kredex housing loan jessica

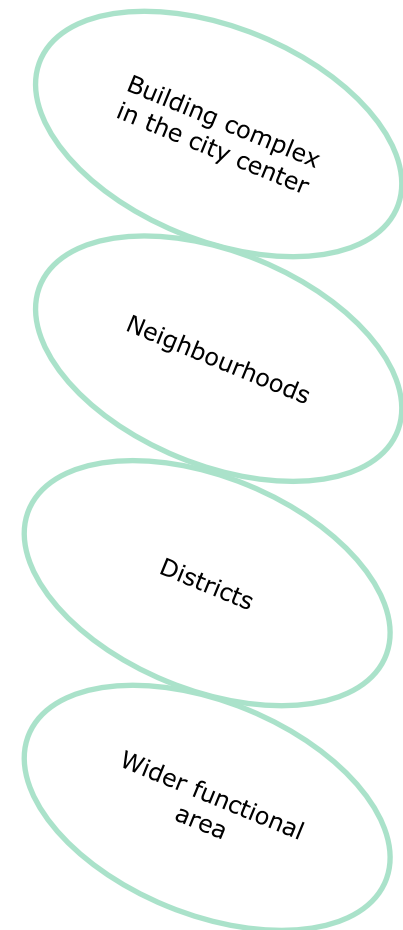




- Start 24.06.2009
- By 31.08.2012:
- 496 contracts/478 houses
- 17 654 apartments, 40 000 inhabitants
- Ca 1 150 000 m²
- Total € 48,1 mio
- Investment € 66,7 mio
- Average € 103 836
- Expected saving 36%

CASE STUDIES ON PARTICIPATION

Country	City	Project title
DE	Berlin	Socially integrative city focus on a Neighbourhood management practice in Berlin
IT	Puglia	Bollenti Spiriti Youth Programme for urban regeneration
PL	Wroclaw	Pilot project of regeneration of Nadrodze District (URBACT)
PT	Porto	Urban gardening managed by LIPOR metropolitan waste agency
RO	Alba Iulia	Participatory survey in a Roma neighbourhood (URBACT)
UK	Derry	Grass-roots initiative to heal divisions across the divided communities in Derry City and across border in Co. Donegal
DE	Berlin	Socially integrative city focus on a Neighbourhood management practice in Berlin

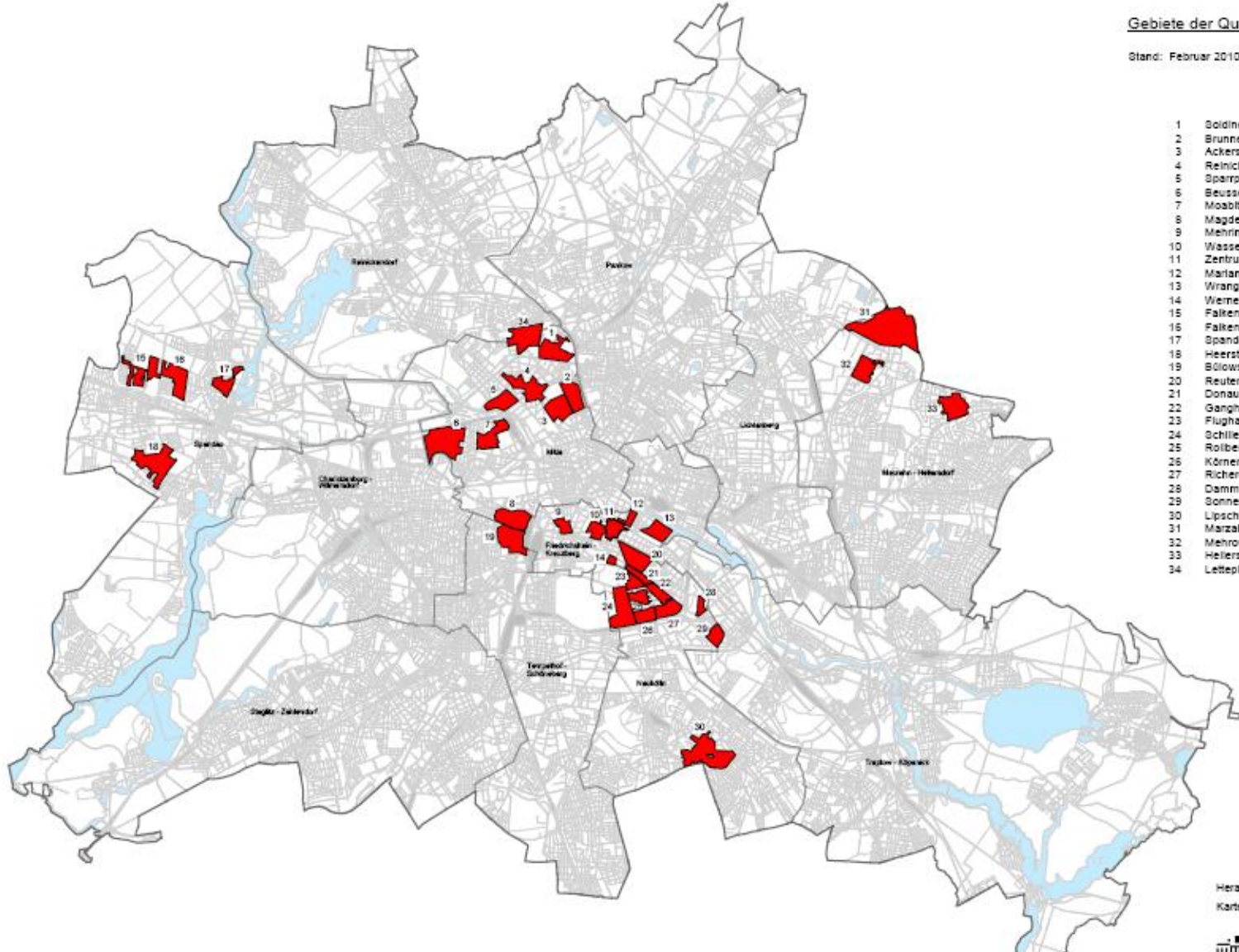




European

Gebiete der Quartiersverfahren Soziale Stadt

Stand: Februar 2010



- 1 Goldiner-Wollankstraße
- 2 Brunnenstraße
- 3 Ackerstraße
- 4 Reinickendorfer-Pankstraße
- 5 Sparplatz
- 6 Beusselstraße
- 7 Moabit - Ost
- 8 Magdeburger Platz
- 9 Mehringplatz
- 10 Wasserloppplatz
- 11 Zentrum Kreuzberg / Oranienstraße
- 12 Mariannenplatz
- 13 Wrangelkiez
- 14 Werner-Dütmann-Siedlung
- 15 Falkenhagener Feld - West
- 16 Falkenhagener Feld - Ost
- 17 Spandauer Neustadt
- 18 Heerstraße
- 19 Bölowstraße / Wohnen am Kielpark
- 20 Reuterplatz
- 21 Donaustraße - Nord
- 22 Ganghoferstraße
- 23 Flughafenstraße
- 24 Schillerpromenade
- 25 Rollbergsiedlung
- 26 Körnerpark
- 27 Richerplatz - Süd
- 28 Dammwegsiedlung
- 29 Sonnenallee / High-Deck-Siedlung
- 30 Lipschitzallee / Gropiusstadt
- 31 Marzahn - Nord
- 32 Mehrower Allee
- 33 Helldorfer Promenade
- 34 Letteplatz

Herausgeber: SenStadt Ref. IV B
Kartengrundlage: DlgKS Abt. III

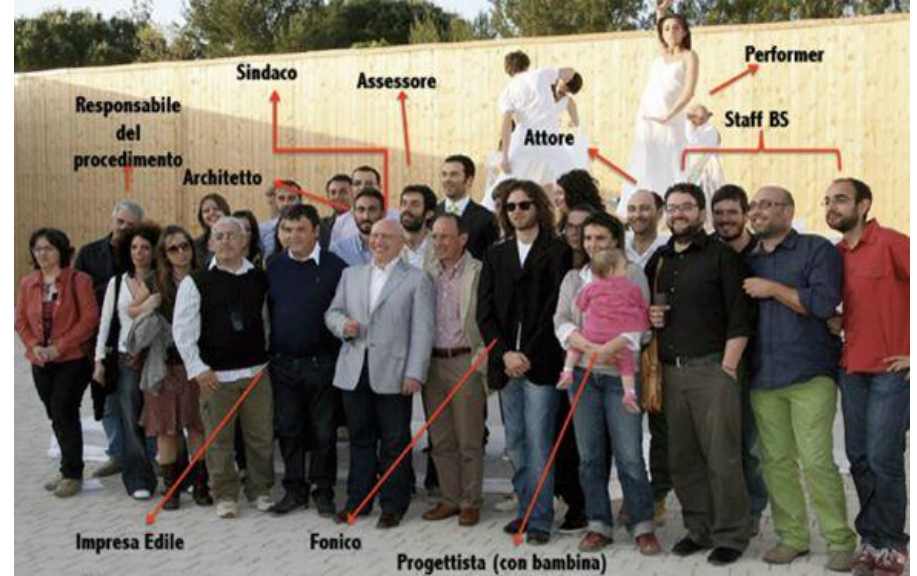




European
Commission



Berlin, DE



Barletta, IT



ACHIEVEMENTS OF PARTICIPATION CASES

- Good practices may be developed at a very limited and small local level;
- They entail direct forms citizens' participation (e.g. delegation self-organization) and cooperation among several institutions at different levels;
- Some projects – Berlin, Duisburg, Amadora, Gdynia, Porto represent significant innovations at EU level;



PARTICIPATION

RECOMMENDATIONS ON PARTICIPATION

- Local public participation needs to be translated into operations at other scales of governance;
- Participative decision-making processes should avoid the unnecessary polarisation of approaches;
- Consensus versus conflict and top-down versus bottom-up are not opposite alternative methods of public participation. They are necessary political moments in the decision-making processes;
- Participation is multifaceted and its meaning can easily be pulled in different political directions and turn into rhetoric.



MEASURING EFFECTIVENESS



- There was poor data on outputs at project level
- There was a no good information about results – specifically the changed situation as a result of the policy and hardly any baseline data
- Not much evaluation at the project level
- Lack of feedback of evidence to inform practice.
- Cities should act to improve project level evaluation or their pleas for more resources will be ignored

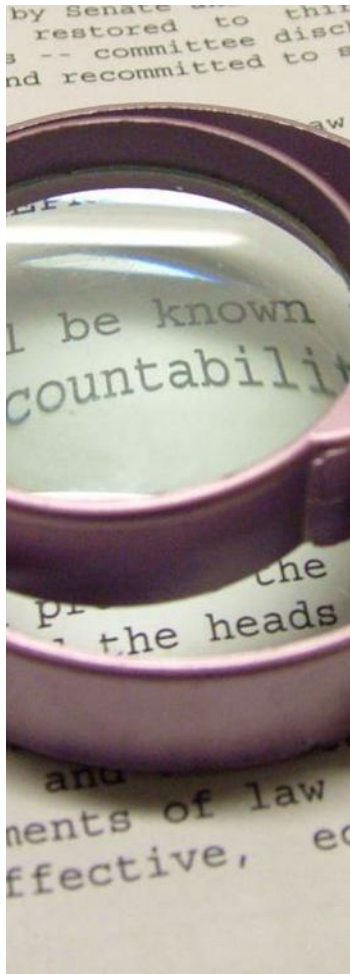
MAIN MESSAGES



- More Integration and transparency in smaller projects, less in large projects
- Tension between smart growth and inclusive growth
- The capacity to innovate and implement needs to be developed ;
- Financial engineering has been challenging to implement (but don't give up)
- Transparency, and measuring results need to be strengthened at project level;
- Policy learning, city exchange and cooperation can accelerate the spread of good practice (URBACT 3 Interreg 5C).

Transform Spanish urban governance

- *Build social innovation into your work – look at what Seoul is doing use CLLD to do it locally*
- *Break down the departmental silos*
- *Organise flat teams not vertical hierarchies*
- *Work at the local through the city regional level*
- *Build partnerships with private and civil society actor*
- *Learn from others (Seoul, Medellin, Berlin) and translate their ideas into your version*
- *Be open, transparent, accountable and online*



Visit the cases

- DG Regional and Urban policy website – Policy learning database

http://ec.europa.eu/regional_policy/projects/practices/index_en.cfm

- AEIDL website

<http://www.aeidl.eu/en/projects/territorial-development/urban-development.html>





Thank you!

**peterramsden2@gmail.
com**