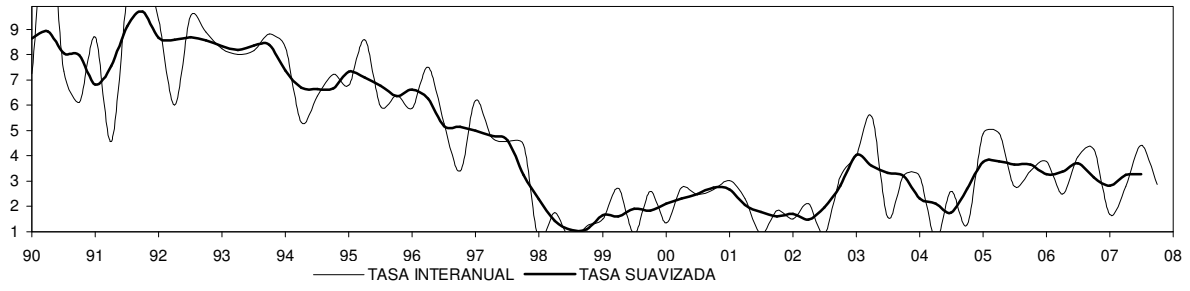
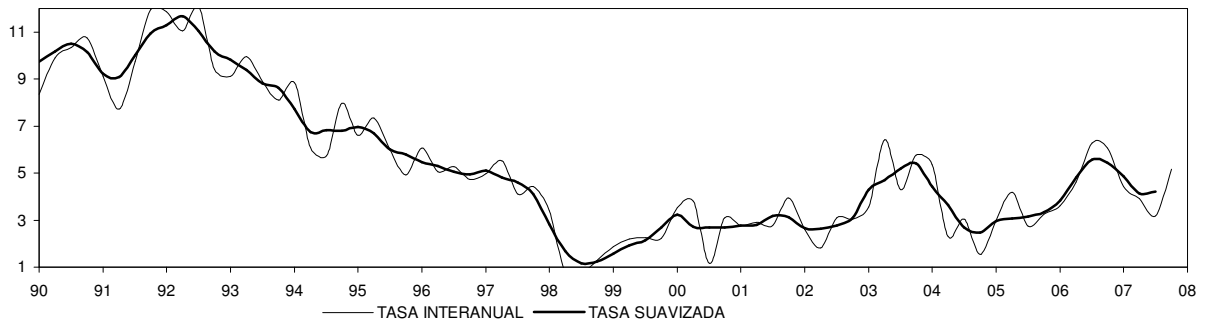


# LA RIOJA

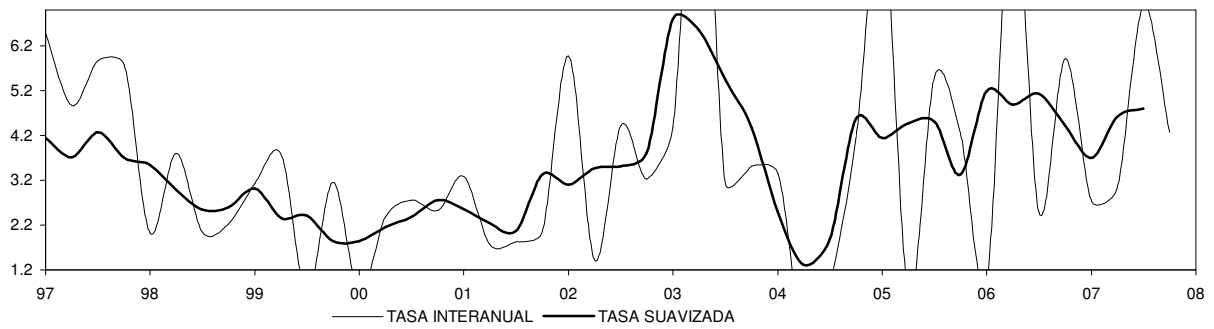
## COSTE SALARIAL TOTAL POR TRABAJADOR Y MES



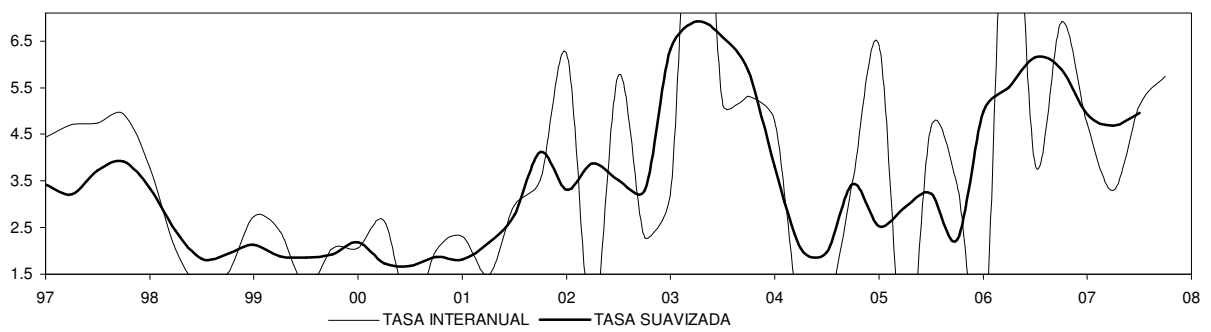
## COSTE SALARIAL ORDINARIO POR TRABAJADOR Y MES



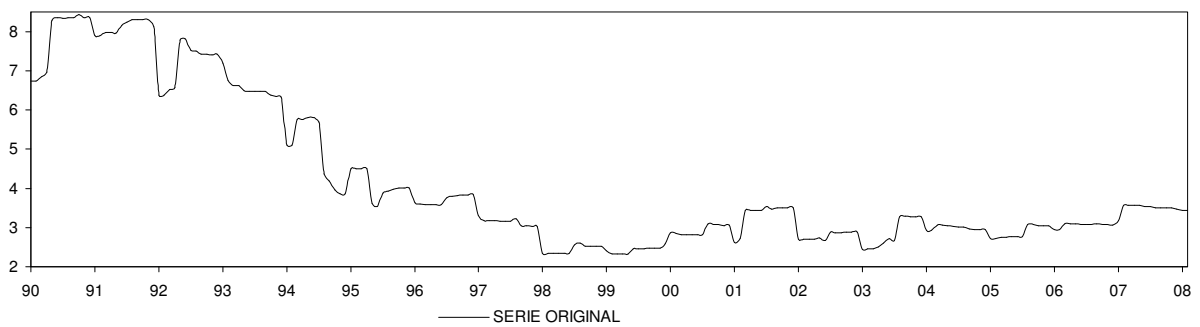
## COSTE SALARIAL TOTAL POR HORA EFECTIVA DE TRABAJO



## COSTE SALARIAL ORDINARIO POR HORA EFECTIVA DE TRABAJO

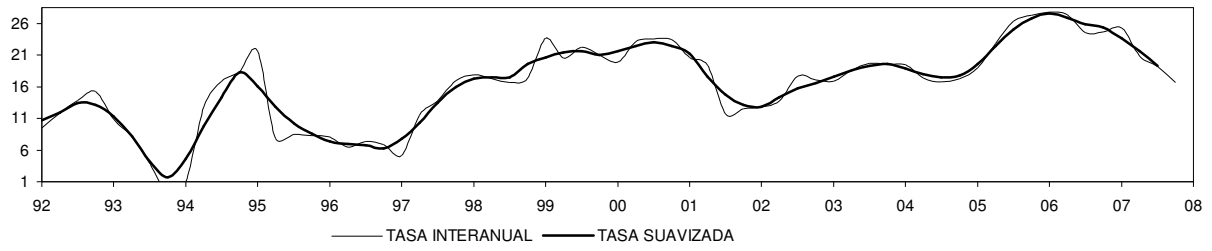


## INCREMENTO SALARIAL REVISADO. TOTAL

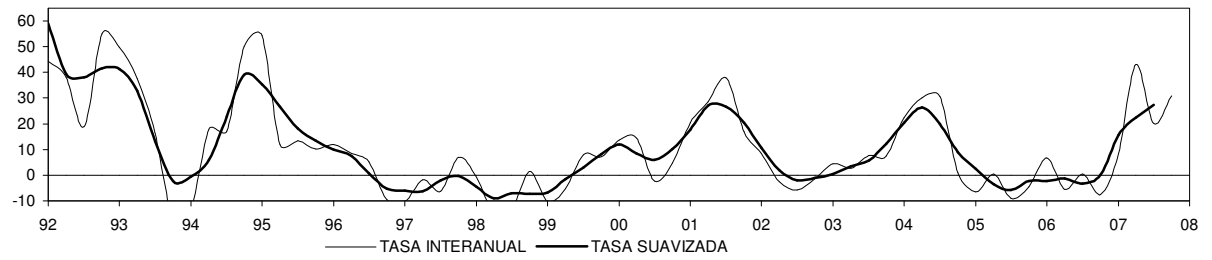


# LA RIOJA

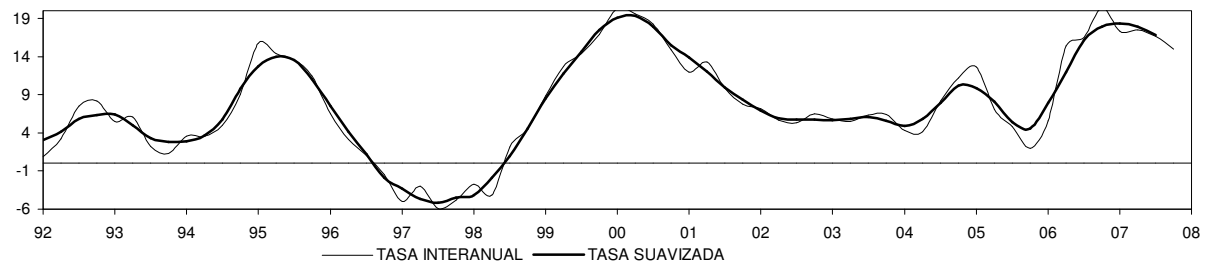
## CRÉDITOS AL SECTOR PRIVADO



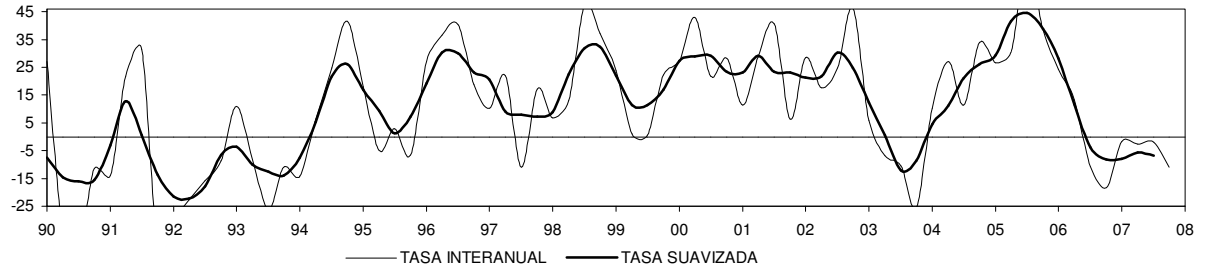
## CRÉDITOS AL SECTOR PÚBLICO



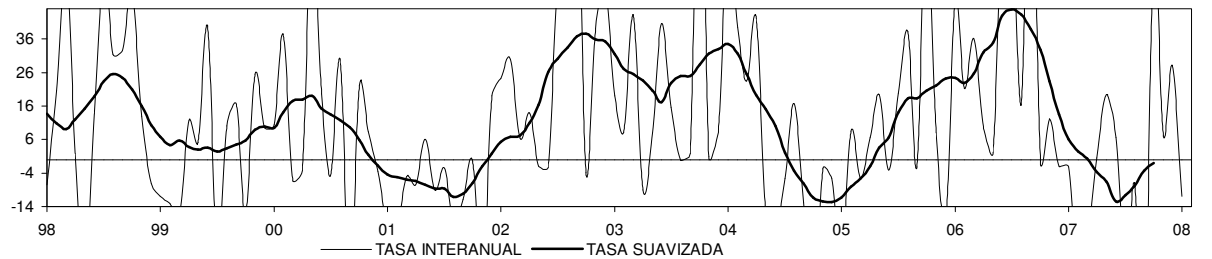
## DEPÓSITOS DEL SECTOR PRIVADO



## DEPÓSITOS DEL SECTOR PÚBLICO



## HIPOTECAS INMOBILIARIAS: NÚMERO



## HIPOTECAS INMOBILIARIAS: IMPORTE

