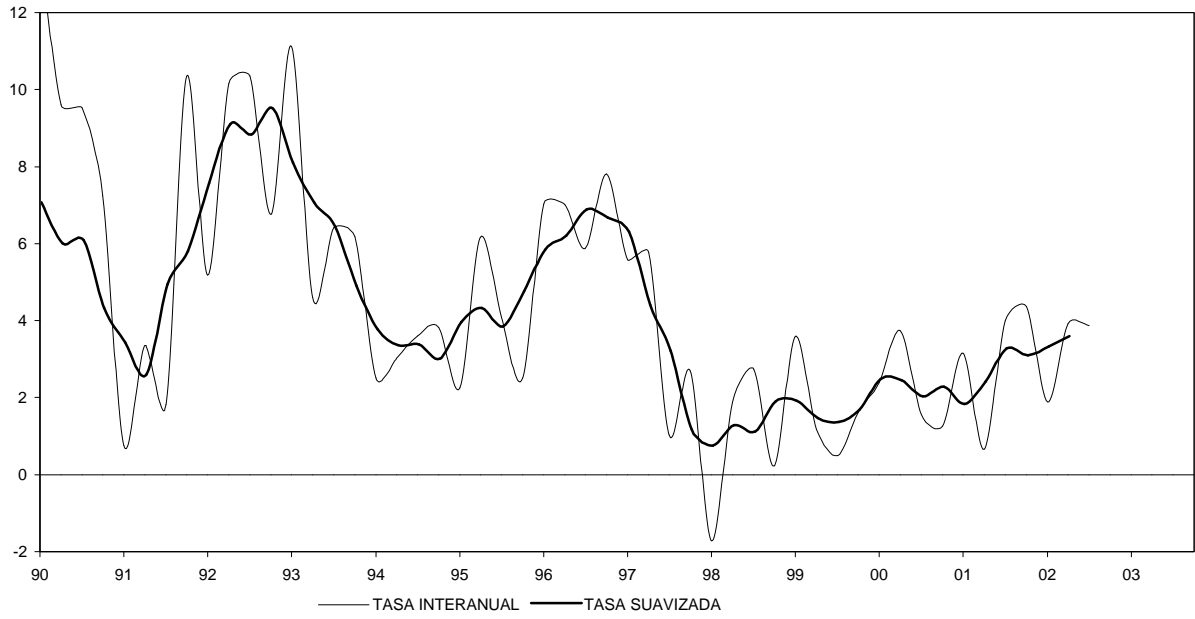
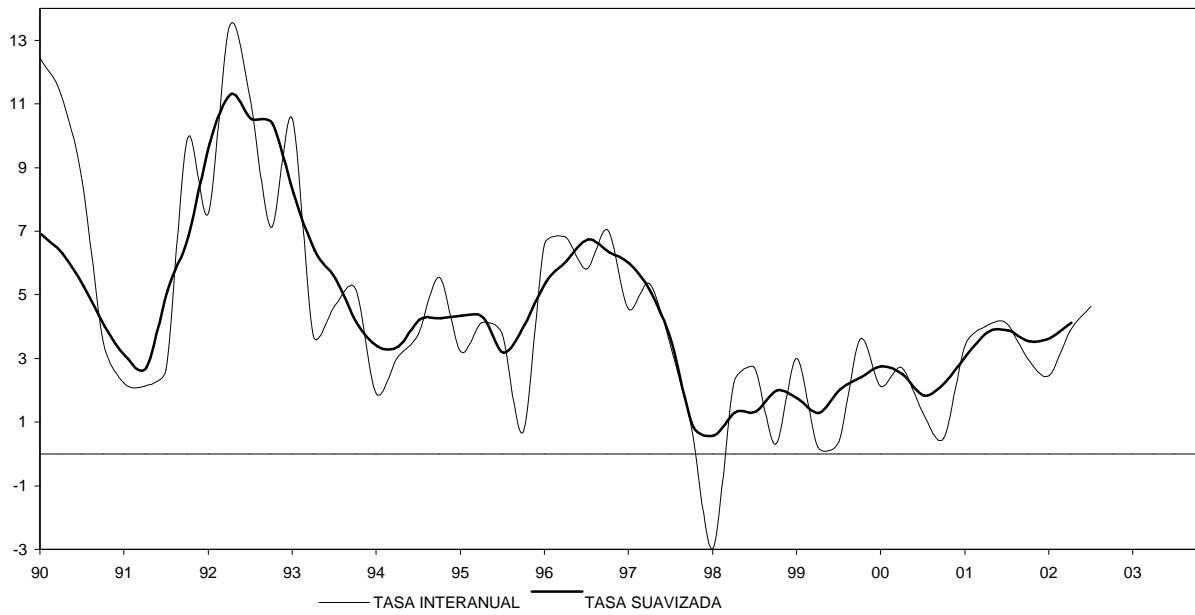


# ASTURIAS

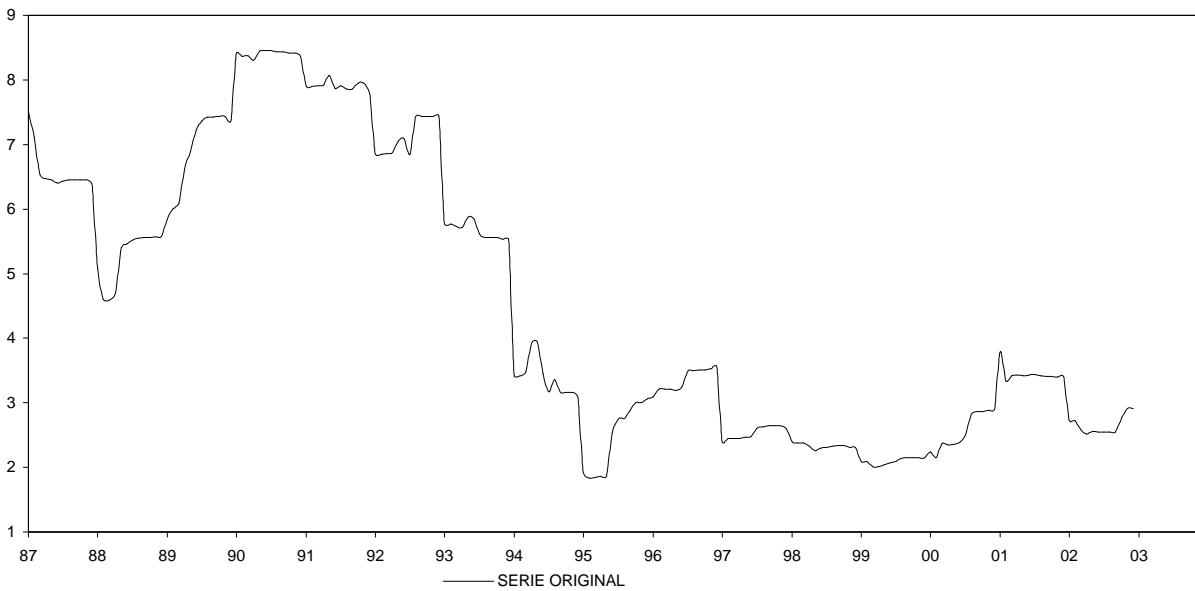
## COSTE SALARIAL TOTAL POR TRABAJADOR Y MES



## COSTE SALARIAL ORDINARIO POR TRABAJADOR Y MES

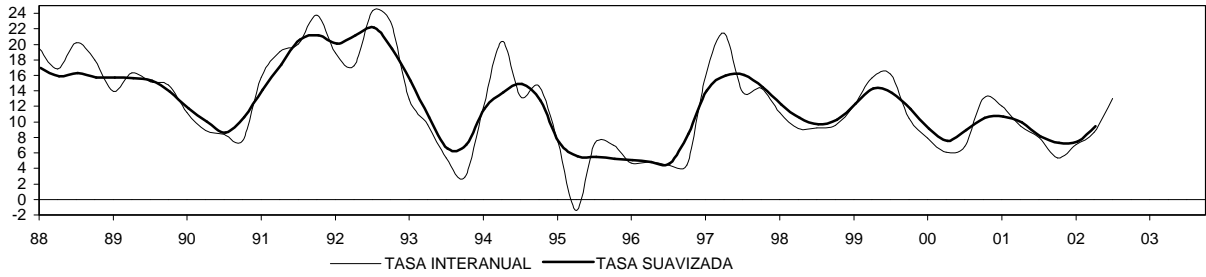


## INCREMENTO SALARIAL REVISADO. TOTAL

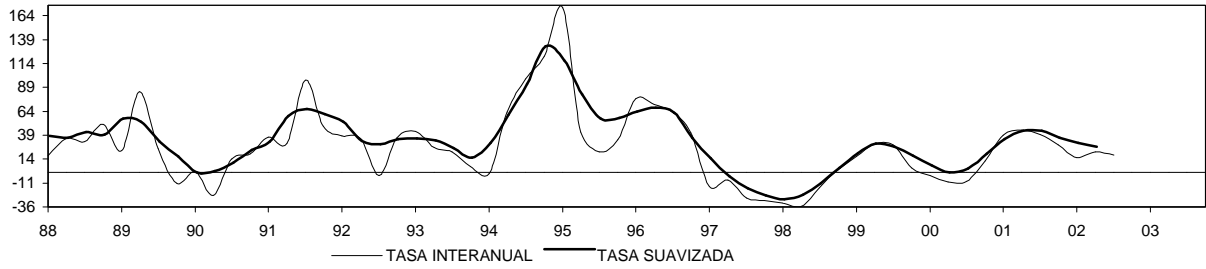


# ASTURIAS

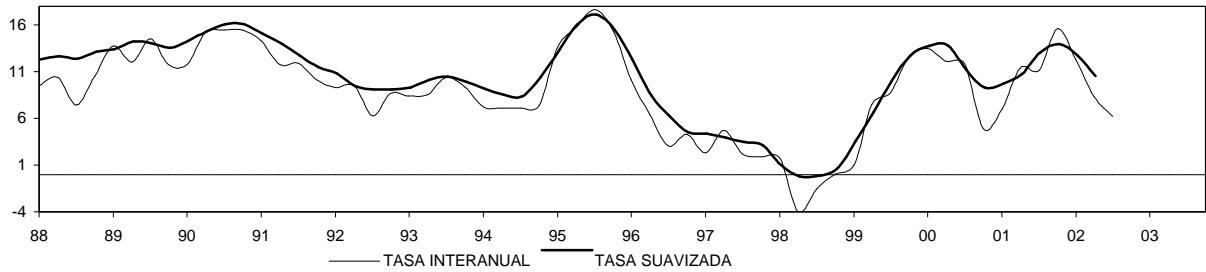
## CRÉDITOS AL SECTOR PRIVADO



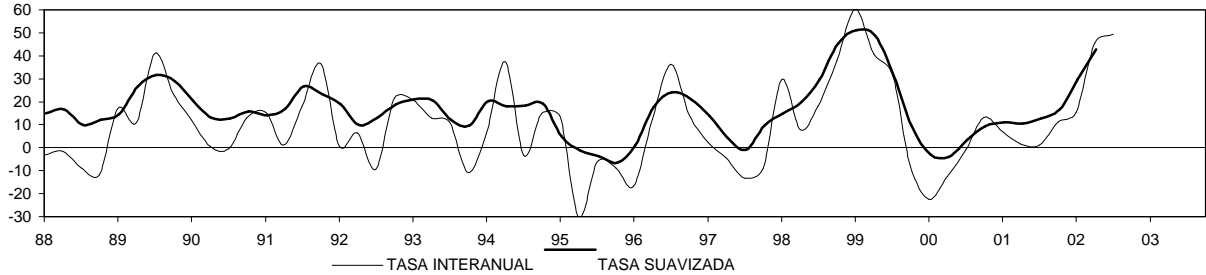
## CRÉDITOS AL SECTOR PÚBLICO



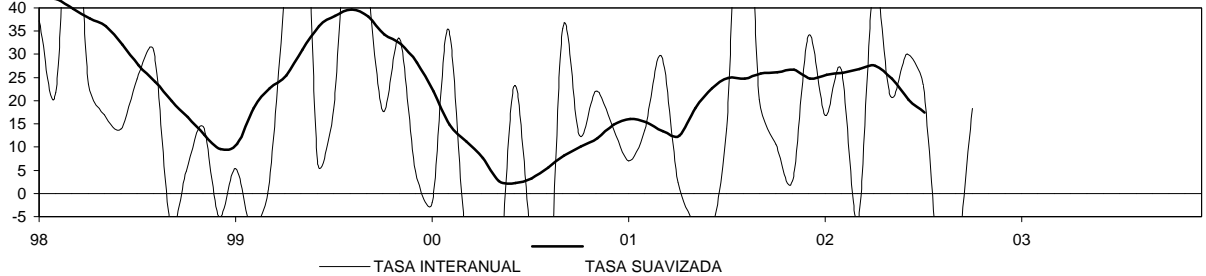
## DEPÓSITOS DEL SECTOR PRIVADO



## DEPÓSITOS DEL SECTOR PÚBLICO



## HIPOTECAS INMOBILIARIAS: NÚMERO



## HIPOTECAS INMOBILIARIAS: IMPORTE

