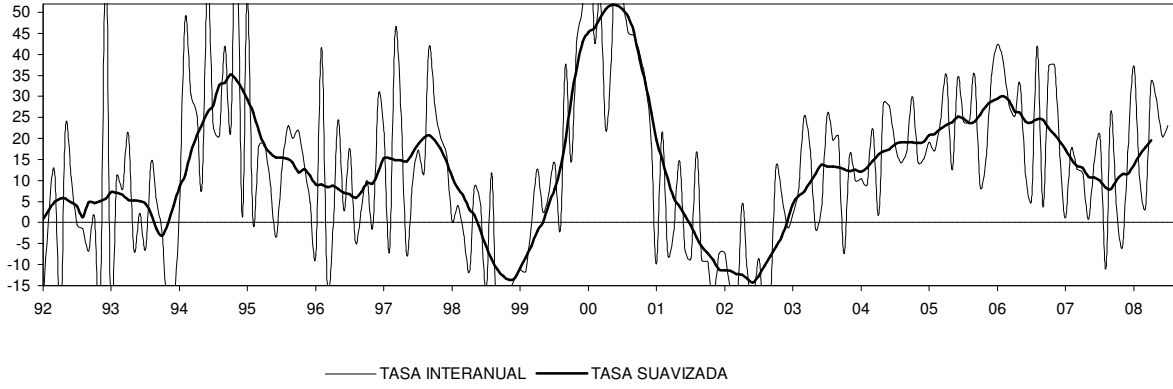
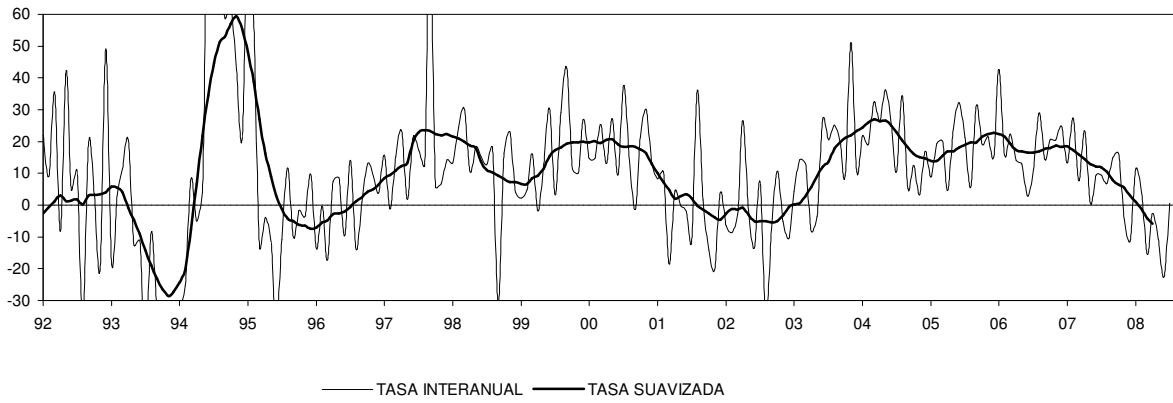


# ANDALUCÍA

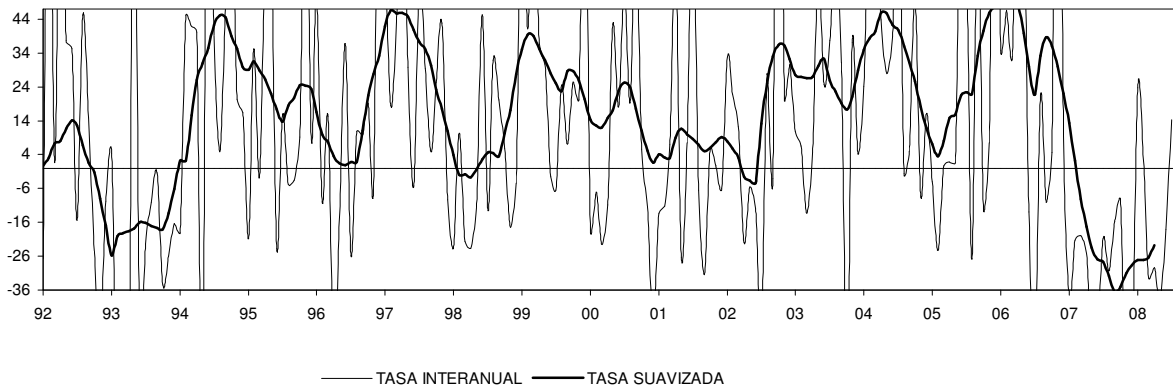
## IMPORTACIONES TOTALES



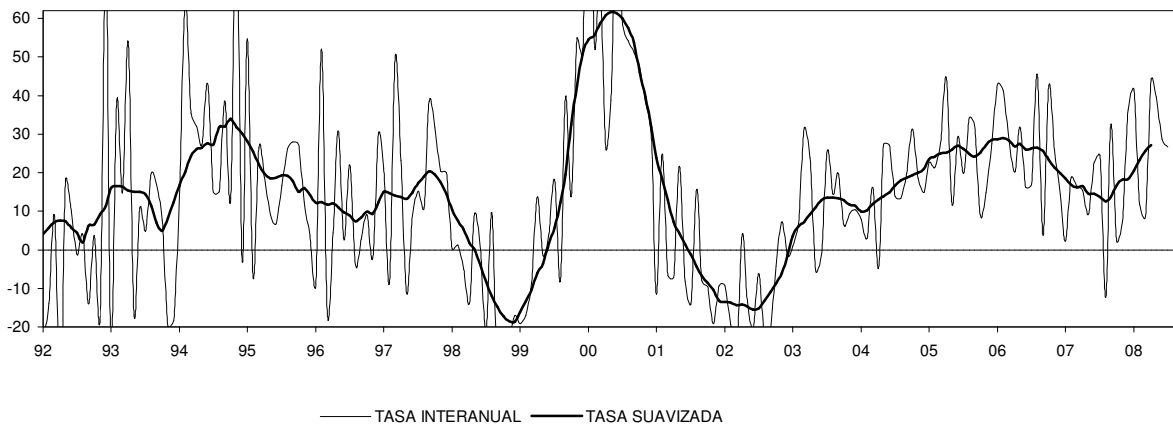
## IMPORTACIONES DE BIENES DE CONSUMO



## IMPORTACIONES DE BIENES DE CAPITAL

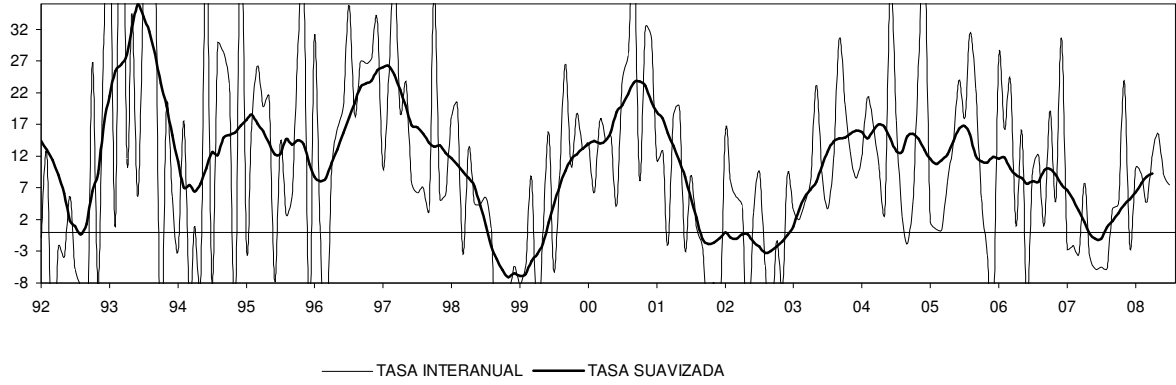


## IMPORTACIONES DE BIENES INTERMEDIOS

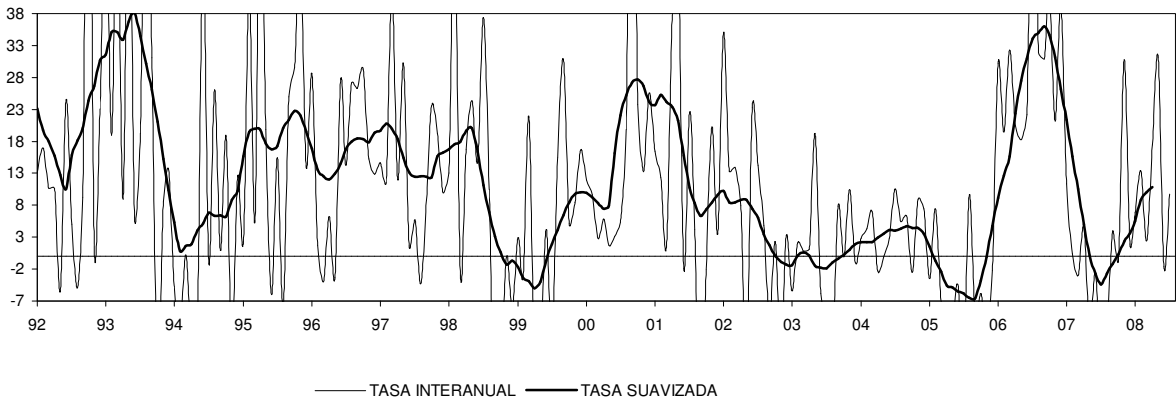


# ANDALUCÍA

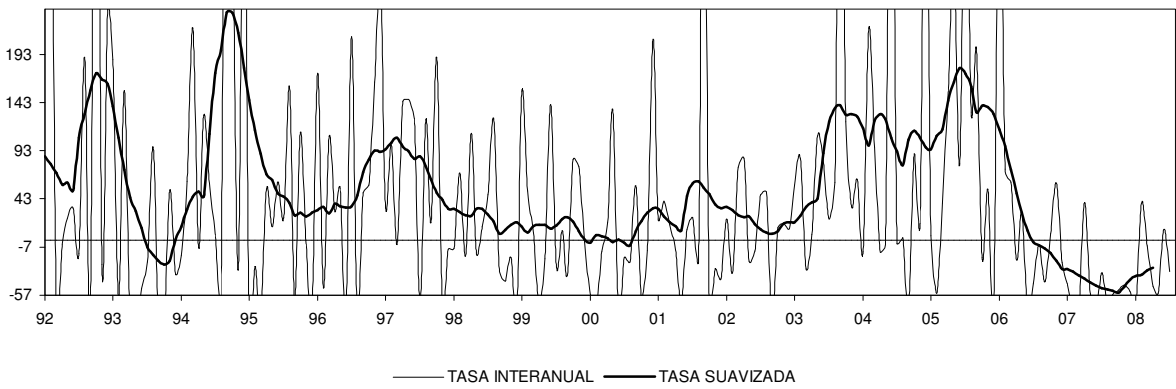
## EXPORTACIONES TOTALES



## EXPORTACIONES DE BIENES DE CONSUMO



## EXPORTACIONES DE BIENES DE CAPITAL



## EXPORTACIONES DE BIENES INTERMEDIOS

