

Una manera de hacer Europa

BUENAS PRÁCTICAS Actuaciones Cofinanciadas

Clean point in northern Melilla

**Programa Operativo
de la Ciudad de Melilla**

Año 2022

Fondo Europeo de Desarrollo Regional

CLEAN POINT IN NORTHERN MELILLA

SHORT DESCRIPTION

One of the main environmental problems in the Autonomous City of Melilla is waste prevention and management. In the city, there was no separate collection of hazardous waste from households, businesses, and workshops considered to be small producers, which made the ecological management of this type of waste necessary in line with the European principle of Sustainable Development.

Under these premises, a Clean Point is created in the northern part of the city, equipped with the facilities and urban services necessary for its operation.

At the Clean Point, three independent and differentiated areas of use were established so that the vehicle traffic in each of these areas did not interfere with the traffic in the other areas inside the enclosure. Each zone is at a different level to facilitate loading and unloading activities. The unevenness between them was resolved through the construction of reinforced concrete walls.

The three zones are:

- Level 1 Lower platform for collection and exchange of containers.
- Level 2 Intermediate platform for unloading public waste.
- Level 3 Upper platform for unloading glass and plastic containers.

The lower level shares access with the facilities of the Authorised Vehicle Reception and Decontamination Centre. This is where different containers for different waste fractions were located. Vehicle traffic in this area is limited to trucks and tractors that collect and exchange containers. The containers were weighed on existing scales in the Authorised Vehicle Reception and Decontamination Centre. A firefighting tank with a pressure pump system was installed at this level.

The intermediate level is for citizens who wish to deposit waste generated in their homes. It has exclusive entrance and exit access for this level and is close to the lower level to facilitate the surveillance and control of both doors. It also provides access to a Special Waste Covered Area, where waste can be deposited if, due to its nature, it must be collected indoors.

This special waste-covered area is equipped with spillage basins to prevent the generation of leachate from contaminating the land. By means of an internal formation of slopes on the floor, the water leads to grease separators that are connected to the sewage system of the facility.

Clean Point in Northern Melilla



In addition, with part of the land obtained from the emptying, slope consolidation restoration was carried out on a plot near the Clean Point, which was habitually used by the public for the illegal dumping of rubble. Owing to the steep and arid nature of its slopes, the rains produced surface runoff that eroded and made the slopes unstable. The slopes were softened by filling in the land and planting 150 Araal or Sabina de Cartagena (*Tetraclinis articulata*) seedlings.

The investment made was 984,500 euros, 80% of which was co-financed by the ERDF (787,600 euros). The surface area occupied by the Clean Point in the northern area of Melilla was 5,425 m², and the volume of household waste collected selectively as a percentage of household waste production was 14.75%.

Clean Point in Northern Melilla



This action is **considered good practice** for the following reasons.

1. The role of the ERDF in the action has been adequately disseminated to beneficiaries, potential beneficiaries, and the public.

The following is a graphical summary of the communication activities conducted.

Construction site poster



Website



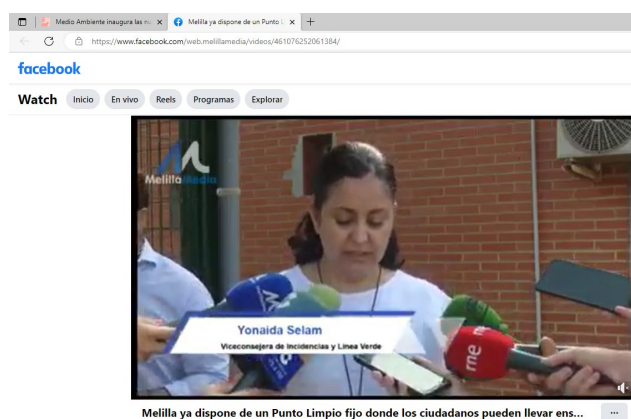
Press leaflet



Inauguration event



Information on social media



<https://www.facebook.com/watch/?v=46107625061384/>

News in local press



Press conference



2. This action incorporated innovative elements.

The innovation of the action derives from the use given to the land emptied from the Clean Point plot and not turning it into construction and demolition waste but reusing it with the aim of restoring a degraded area, habitually used as an illegal dump by the citizens of Melilla, and consequently contributing to the fulfilment of the Sustainable Development Goals.

3. Adequacy of results obtained with established objectives.

The action contributes to achieving the 2020 target for reuse and recycling, in accordance with Article 11 of Directive 2008/98/EC, completing the current waste collection system and improving street cleaning in accordance with the relevant Municipal Ordinances, increasing the recycling capacity of the Autonomous City of Melilla, increasing the use of materials contained in solid waste that can be directly recycled, preventing the uncontrolled dumping of bulky waste, and, in short, achieving a cleaner municipality.

Work on the construction of the Clean Point



4. Contribute to the resolution of a problem or weakness identified in the implementation area.

In the Autonomous City of Melilla, there was no differentiated collection of hazardous waste from households, businesses, and workshops considered small producers, so it was necessary to have an infrastructure such as a Clean Point in the northern part of the city to carry out the ecological management of this type of waste.

Brochure for citizens

PUNTO LIMPIO FIJO

Ubicación	Carretera Huertas de Hidum s/n	
Horario	VERANO (1 jun-30 sept) Lunes a sábado 08:00 - 14:00 17:00 - 20:00	INVIERNO (resto del año) Lunes a sábado 08:00 - 14:00 16:00 - 18:30

RESIDUOS NO PELIGROSOS

	Cantidad máx. por usuario
Podas domiciliarias	50 kg/día
Textiles (ropa, calzado...)	5 bolsas/día y 50 kg/mes
Enseres y voluminosos (colchones, muebles...)	1/día o 100 kg/mes
Neumáticos (excepto vehículos industriales)	5/año (*) (**)
Metales ferrosos (hierro, acero...)	50 kg/mes
Metales no ferrosos (cobre, aluminio, estaño...)	50 kg/mes
Maderas (palets)	2/día o 30 kg/mes
Bombillas	5
Pilas ordinarias y alcalinas	20 o 1 recipiente con 5 kg máx./día

RESIDUOS PELIGROSOS

	Cantidad máx. por usuario
Tubos fluorescentes	5/mes (**)
Baterías	2/mes (**)
Pinturas (dentro de sus envases)	5 kg/día o 5 botes de 1 kg máx./día (**)
Aerosoles	5/día o 5 recipientes de 5 kg máx./mes

(*) Se deberá entregar la goma separada de la llanta para depositar cada residuo en el contenedor correspondiente. Se deberá presentar factura de compra de los neumáticos nuevos.

(**) Residuos admisibles únicamente a nivel particular.

5. High degree of coverage of target population.

The principles of sustainable management from an economic, environmental, and social point of view imply the management of resources that tends to reduce the consumption of materials and energy, decoupling economic growth from the consumption of natural resources. Therefore, it is essential to propose a form of management based on the prevention of waste generation, followed by the use of the resources contained in the waste. This sustainable waste management is aimed at the entire population of the Autonomous City of Melilla, providing it with essential infrastructure for sustainable growth.

Work on the construction of the Clean Point



6. Consideration of the horizontal criteria of equal opportunities and non-discrimination as well as social responsibility and environmental sustainability.

Both horizontal criteria were incorporated into this action. With regard to equal opportunities and non-discrimination, the action is aimed at all citizens of Melilla, providing them with an infrastructure to contribute to the sustainable development of the city, where the main protagonist is the citizenry. In addition, in all the documentation produced and in all the communication actions undertaken, the use of inclusive and non-sexist language can be seen.

In turn, the action has a direct and positive impact on the environment by preventing the environmental impact of uncontrolled dumping and contributing to appropriate disposal, such as reuse, recycling, energy recovery, or safe disposal in controlled landfills.

DECÁLOGO DE BUENAS PRÁCTICAS

- | | | | |
|---|---|--|---|
| <p>01.
DEPOSITA LA BASURA
ENTRE LAS 19:30 Y
LAS 23:00</p> |  | <p>06.
NO TIRES ESCOMBROS</p> |  |
| <p>02.
NO TIRES CENIZAS
CALIENTES NI
RESIDUOS LÍQUIDOS</p> |  | <p>07.
NO TIRES GRANDES
CANTIDADES DE
RESTOS DE PODA</p> |  |
| <p>03.
DEPOSITA LA BASURA
EN BOLSAS
CERRADAS</p> |  | <p>08.
NO ALIMENTES A
GATOS, PERROS NI
GAVIOTAS</p> |  |
| <p>04.
NO PEGUES CARTELES
NI ESTROPEES LOS
CONTENEDORES</p> |  | <p>09.
RECOGIDA DE MUEBLES
Y ENSERES EN EL TLF.
952684765 DE LUN A
VIE DE 08:00 A 15:00</p> |  |
| <p>05.
CIERRA LAS TAPAS,
EVITARÁS MALOS
OLORES Y QUE
CIERTOS ANIMALES
ESPARZAN LA BASURA</p> |  | <p>10.
RECICLA</p> |  |



CIUDAD AUTÓNOMA
MELILLA
Consejería de Medio Ambiente y Sostenibilidad
DIRECCIÓN GENERAL DE SOSTENIBILIDAD

CONSEJERÍA DE
MEDIO AMBIENTE
Y SOSTENIBILIDAD
CIUDAD AUTÓNOMA DE MELILLA

7. Synergies with other public policies or instruments for public interventions.

In addition to contributing to the improvement of the environment and sustainable development, the action encourages education, reuse, and raising awareness among citizens so that they become part of a cleaner and more environmentally friendly city, thereby promoting sustainable growth in Melilla.



Una manera de hacer Europa



Fondo Europeo de Desarrollo Regional