

Una manera de hacer Europa



BUENAS PRÁCTICAS Actuaciones Cofinanciadas

DI 9FH5 `89 @HI F-5 `D5 F?. `5 `B9K ` @ B8 G7 5 D98 `DI 6 @7 ` GD57 9 `K #k `7 <=@ F9B@D@M; FCI B8 G`5 B8 `C: : 9F=B; ` 5779GG`HC`HI F-5 `B5HI F5 @D5 F?

Ei UfhXY`DcV`Yh7]mi7 ci bW

**Programa Operativo
Plurirregional de España**

Año 2020

Fondo Europeo de Desarrollo Regional

Good practice: PUERTA DEL TURIA PARK: A NEW LANDSCAPED PUBLIC SPACE WITH CHILDREN'S PLAYGROUNDS AND OFFERING ACCESS TO TURIA NATURAL PARK

The Good Practice consists creating a park on an empty lot in José Mestre Descalç Street in the Río Turia neighbourhood. The northern part of the plot borders on the Turia River Fluvial Park (classed as a protected natural area), making it a key action to integrate the city within its natural, hydraulic and environmental heritage. It is also essential in promoting the conservation and protection of areas of interest.

The financed intervention has made it possible to turn an unused, deteriorated site into a park that citizens of all ages can use and enjoy, thus recovering its strategic value. Children's playground equipment, benches on which to rest, vegetation and trees have been installed to provide shade. A new entrance to the natural space of the River Turia has also been opened, including a wide ramp so that pedestrians and cyclists can access the riverbed to follow its course. Lastly, streetlights were installed using LED lamps so as to save energy.



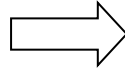
IMAGE OF THE COMPLETED INTERVENTION. IN THE BACKGROUND, RIVER TURIA FLUVIAL PARK

The intervention had an eligible cost of 210,000 euros, of which ERDF aid amounted to 105,000 euros. The operation will directly impact the Río Turia neighbourhood's population of 10,984 residents and, more generally, more than 24,500 municipal residents.

The criteria for identifying this intervention as a good practice are the following:

- 1. THE ERDF'S ROLE IN THE INTERVENTION WAS APPROPRIATELY CIRCULATED AMONGST POTENTIAL BENEFICIARIES AND THE GENERAL PUBLIC.**

With regard to the Regulatory Communication, a construction site information sign was erected during the works and a permanent plaque erected after completion of the works. The operation was also included in the specific section of the single municipal web portal of the Member State: <https://feder-edusi.quartdepoblet.es>.



INFORMATION SIGN AT THE WORKS



PERMANENT PLAQUE



SINGLE WEB PORTAL

This intervention was included in information leaflets on interventions in the Rio Turia neighbourhood.



With regard to the news in the printed press, here we highlight a few articles, published both in the local and regional press. Social networks have likewise reported on the project to ensure ongoing communications over time. All of them publicise the operation, as well as co-financing and the ERDF's role in it. Several images are attached:



Marta Morvedre | Quart inicia las obras de un nuevo parque que facilitará el acceso al río

Quart inicia las obras de un nuevo parque que facilitará el acceso al río



La actuación, que cuenta con un presupuesto de 180.000 euros, prevé eliminar las escaleras existentes y limpiar la acera.

A. D. QUART.
 Miércoles, 13 junio 2018, 00:41

La entrada al río será más accesible desde las calles José Mestre Descalç y Reverendo Pedro García Cerdà tras las obras de construcción del Parque Puerta del Turia que el Ayuntamiento de Quart de Poblet ha iniciado esta semana. Este proyecto cuenta con un presupuesto de más de 180.000 euros, financiado por el Fondo Europeo de Desarrollo Regional (Feder) a través del Programa Operativo Plurirregional de España (POPE) 2014-2020 para las Estrategias de Desarrollo Urbano Sostenible Integrado (Edusi).

El Fanalet

Quart de Poblet culmina ya cuatro de sus proyectos FEDER-EDUSI

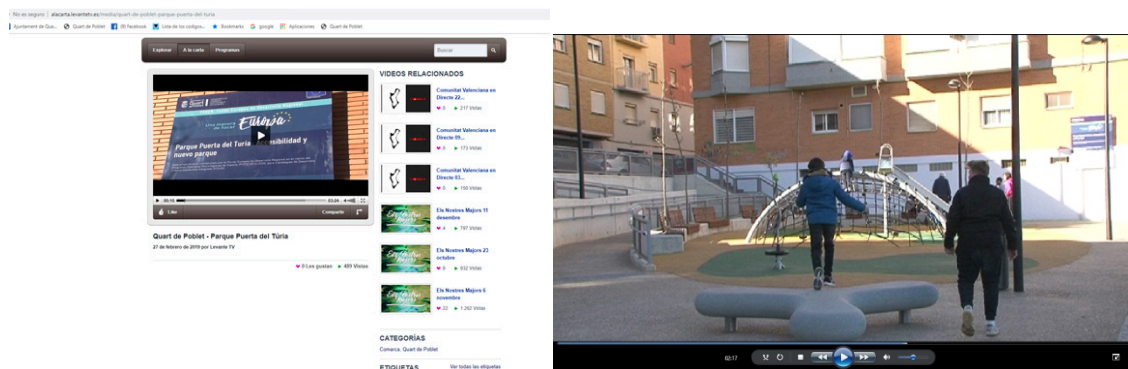
El desarrollo de la EDUSI en Quart de Poblet ya muy adelantado. Ya se ha ejecutado un 39% de los proyectos y un 32,94% de la estrategia está contratada. El proyecto se extiende hasta 2022.



El Ayuntamiento de Quart de Poblet ha iniciado esta semana las obras de construcción del Parque Puerta del Turia, que facilitará el acceso al río desde las calles José Mestre Descalç y Reverendo Pedro García Cerdà. Este proyecto cuenta con un presupuesto de más de 180.000 euros, financiado por el Fondo Europeo de Desarrollo Regional (Feder) a través del Programa Operativo Plurirregional de España (POPE) 2014-2020 para las Estrategias de Desarrollo Urbano Sostenible Integrado (Edusi).



Meanwhile, a video was made to capture the environment’s transformation visually. Furthermore, the public was involved in interviews in which they gave their impressions. This video was made and broadcast by a high-reach regional medium, Levante Televisión, guaranteeing diffusion of the intervention both within the town and further afield.



Link to the video:

<https://www.youtube.com/watch?v=TDwehFipe0s&t=15s>

2. THE INTERVENTION INCORPORATES INNOVATIVE ELEMENTS.

Puerta del Turia Park’s inauguration creates the first direct entrance to the Turia River Park from the city centre. In this way, natural space is integrated into the town so citizens can take better advantage of and enjoy the river.

The action combines promotion of local natural heritage, of which the population is often unaware, as well as recovery of a deteriorated space, thereby helping to improve residents’ quality of life in the neighbourhood, as well as that of citizens in general. Furthermore, it is close to the centre of town, meaning that the river can be reached in just a few minutes from anywhere.

It is worth noting that it was one of the most voted projects in the 2018 participatory budget campaign, which guarantees the inclusion of citizens in decision-making. Residents decided by public vote that part of the ERDF fund should be allocated to creating this park.

Quart de Poblet

CONOCE LOS RESULTADOS DE LOS PRESUPUESTOS PARTICIPATIVOS 2018

suponen las siguientes actuaciones por orden de votos recibidos: creación de un taller de formación para el empleo de jardinería y agricultura ecológica (515 apoyos); colocación del nuevo mobiliario urbano en la instalación del Parque Polideportivo Recreativo (503 votos); **adecuación de los huertos ecológicos en el Parque Fluvial del Turia (464 votos), y creación del parque Puerta del Turia accesible por la calle José Mestre Descals (439 votos).**

Como se ve, tres de las actuaciones están vinculadas a la sostenibilidad a través del importante patrimonio natural que representa el Turia y su entorno, tanto desde la perspectiva del acceso a este espacio como de la aproximación a la agricultura ecológica como nuevo yacimiento de empleo.

RESULT OF THE PARTICIPATORY BUDGET CAMPAIGN

3. MATCHING RESULTS OBTAINED TO THE ESTABLISHED OBJECTIVES.

The intervention has attained the objective of disseminating and enhancing the value of the area's natural and cultural heritage and promoting its potential for tourist use. It has also succeeded in transforming a deteriorated, unused space into a pleasant, accessible area for residents.



THE DETERIORATED AREA HAS BEEN TURNED INTO A PLEASANT SUSTAINABLE SPACE

One of the priorities has been fulfilled, which was to open the natural park to the public so that they could enjoy it, integrating it as a prominent space within the urban area, hence its name: Puerta del Turia (Door onto Turia). It also facilitates access to urban and organic vegetable gardens within the protected area of the river, thereby promoting sustainable agriculture.

In line with the objective of opening up the natural park to the public, guided routes along the riverbed and environmental education activities can be organised, as it forms a starting point for the natural setting of the river and leads back to the town centre. In this line, due to the current pandemic situation, meetings with the public have taken place with reduced capacity. At these events, the project was used to publicise the project's co-financing and the ERDF's role in making it possible.

Furthermore, they aimed to show the natural richness of the Turia riverbed and publicise the park and its role as a space at the entrance to the river and to integrate the landscape.



MEETING WITH THE PUBLIC TO RAISE AWARENESS OF THE IMPORTANCE OF EUROPEAN CO-FINANCING FOR THIS PROJECT'S IMPLEMENTATION

4. CONTRIBUTION TO RESOLVING A PROBLEM OR WEAKNESS DETECTED IN THE TERRITORIAL SCOPE OF WORKS.

With the Best Practice, the degradation detected in the area and in part of the Río Turia neighbourhood will be prevented. The site on which the new park is located was in a state of great disrepair and was not being used for any purpose. This not only provides the neighbourhood with a new outdoor meeting space, offering urban quality as well as responding to a neighbourhood demand, but it also connects the riverbed and the park to promote the town's natural heritage. It furthermore allows access to the river for citizens both on foot and by bicycle. So this intervention constitutes a fundamental strategic pillar for the neighbourhood's renovation and transformation.

5. DEGREE OF COVERAGE OF THE POPULATION TOWARDS WHOM IT IS DIRECTED.

The project takes place between the historic centre and the river, a central area of the town. Thanks to its convenient location, it can be reached on foot or by bicycle from any part of the town in a few minutes. Having created the first fully accessible entrance to the river, the degree of coverage is not only for neighbourhood inhabitants but also for the local population as a whole. In this sense, it is worth highlighting the environmental activities and guided routes along the riverbed that the Town Council promotes, which use this enclave as a meeting point.

6. CONSIDERING THE HORIZONTAL CRITERIA OF EQUAL OPPORTUNITIES AND NON-DISCRIMINATION, ALONG WITH SOCIAL RESPONSIBILITY AND ENVIRONMENTAL SUSTAINABILITY.

The project has complied with the criteria of equality, non-discrimination and accessibility, as it has created a fully accessible space suitable for people with reduced mobility, for those with disabilities and for elderly users. Cyclists can also access the river via a wide, gentle ramp, encouraging the use of this clean and sustainable transport. Likewise, the inclusion of playground equipment and benches invites people of all ages to enjoy this new space and the natural park. All this has meant the creation of a pleasant attractive space, with vegetation, which promotes sustainable, responsible enjoyment of the river environment.

From planning the project and during its execution, the environment was shown special respect and commitment, promoting protection of the ecosystem surrounding the park. Furthermore, there was a special interest in promoting energy saving. In this line, we can highlight the use of LED lights throughout the park.

7. SYNERGIES WITH OTHER POLICIES OR INSTRUMENTS FOR PUBLIC INTERVENTION.

Complementary actions include those conducted in the Río Turia neighbourhood, in which the Park is located, such as, for example, the redevelopment of Trafalgar Street and Villalba de Lugo Avenue, likewise co-financed by the ERDF and deemed Good Practice. Thanks to the European contribution, both streets have been completely renovated, with wider, more accessible pavements, new trees and rest areas, to create a more pleasant environment for residents. Along these lines, the streets Crescencio Rodilla, Gómez Ferrer and Gravador Esteve (located in the same area) are currently being remodelled, so they will also have more vegetation and be fully accessible for people with reduced mobility.

Also in this neighbourhood, in line with the project to transform it, work has begun on the construction of a two-storey park-and-ride car park, allowing people to leave their cars in a nearby space and move around the neighbourhood and town on foot, thus reducing road traffic and pollution. A pedestrian square with trees, vegetation and bio-healthy games will be created on the surface of this car park, thereby creating a new public space for the enjoyment of citizens and a new green area.

Una manera de hacer Europa



BUENAS PRÁCTICAS

Actuaciones Cofinanciadas

Fondo Europeo de Desarrollo Regional