



Gobierno del
Principado de Asturias



Unión Europea

Una manera de hacer Europa



BUENAS PRÁCTICAS

Operaciones Cofinanciadas

Local Primary Healthcare Centre of Villayón
Regional Department of Health

Programa Operativo del Principado de Asturias

Fondo Europeo de Desarrollo Regional

Año 2017



GOBIERNO
DE ESPAÑA

MINISTERIO
DE HACIENDA
Y FUNCIÓN PÚBLICA

SECRETARÍA DE ESTADO DE
PRESUPUESTOS Y GASTOS

DIRECCIÓN GENERAL
DE FONDOS EUROPEOS

The construction of the new Local Primary Healthcare Centre of Villayón is presented as an example of Good Practices.

The construction of the Local Health Centre of Villayón was an action carried out by the Regional Department of Health of the Principality of Asturias involving an investment of 745,273.30 euros, with 80% co-financed by the **European Regional Development Fund (ERDF) as part of the ERDF Operational Programme for Asturias 2014-2020.**

The population covered amounts to 914 persons.

The health centre, inaugurated in October 2016, is located in the western area of the region, in the capital of the town council with the same name. This municipality is part of Health Area I in the Healthcare Map of Asturias, having the Hospital de Jario (Coaña) 20 kilometres as its main referral centre.

The entire municipality shows difficulties regarding accessibility as this is via secondary roads along mountains.



It is modern, well-lit and comfortable building, having a 685 m² built area that is three times the size of the old health centre.

The space is distributed into three floors: the ground floor has four consulting rooms, a waiting room, a multipurpose area and an administrative area.



The residential area for professionals on call and the continuous care service is located on the first floor.

The storage and pellet boiler areas are found in the semi-basement floor.



The population covered amounts to 914 persons, i.e. almost all the inhabitants of the municipality, belonging to an aged population scattered throughout the territory, mainly dedicated to the farming sector (agriculture and livestock). Around 8,000 medical consultations are performed each, some 4,600 nursing consultations and approximately 800 A&E consultations.

This action is considered to comply with good practices since it fulfils the following:

- **It has been spread widely among its beneficiaries and the public in general:**

The new facilities have been covered widely in the media. Information on the new health centre has been actively disseminated throughout the different regional and local media via all kind of actions such a press releases in the Government of Asturias website, the preparation of an information file on the project for the Web asturias.es website and information of the action spread both in written and digital newspapers and broadcast on the local television. In all these cases, information was always given on the co-financing of the European Union via the European Regional Development Fund (ERDF).

Fondos FEDER 2014-2020

Actuaciones de Fondos Europeos: P.O. FEDER Asturias 2014-2020



FONDO EUROPEO DE DESARROLLO REGIONAL (FEDER)

Una manera de hacer Europa

El Programa Operativo FEDER en Asturias para el periodo 2014-2020, aprobado por la Comisión Europea el 14 de julio de 2015, debe contribuir a aumentar la competitividad económica, reforzar la cohesión y la igualdad social y la sostenibilidad del modelo productivo.

En este periodo de programación, la Consejería de Sanidad participa dentro del **P.O. FEDER de Asturias 2014-2020** realizando inversiones en infraestructuras sanitarias, en el ámbito de intervención FEDER, que contribuyen al desarrollo regional y reducen las desigualdades sanitarias así como en la mejora de las prestaciones de los servicios públicos de e-salud.

Contacta

Servicio de atención ciudadana

[Llámanos al 012](#)

[Escribenos al buzón ciudadano](#)

[Ven a vernos a nuestras oficinas](#)

Proyectos cofinanciados por el Fondo Europeo de Desarrollo Regional en la actualidad

[Obras de construcción del Consultorio Local de Villayón \(Pdf: 1 Mb\)](#)

Actualidad

Sanidad inaugura el nuevo consultorio local de Villayón, que dará servicio a 1.226 personas y ha supuesto una inversión de 677.856 euros



El equipamiento actual, de 685 metros cuadrados construidos, triplica la superficie del anterior. El centro atiende anualmente 8.000 consultas de medicina, 4.600 de enfermería y 800 urgencias

28/10/2016

La directora general de Planificación Sanitaria, Concepción Saavedra, ha visitado el nuevo consultorio periférico de Villayón, un edificio moderno, luminoso y confortable que atenderá desde hoy a una población de 1.226 personas. Las instalaciones, que han supuesto una inversión de 677.856 euros y cuentan con financiación del Fondo Europeo de Desarrollo Regional (FEDER), tienen una superficie construida de 685 metros cuadrados, lo que triplica el espacio del anterior consultorio (211).

El centro atiende anualmente alrededor de 8.000 consultas de medicina, 4.600 de enfermería y aproximadamente 800 urgentes y el nuevo equipamiento mejora notablemente la accesibilidad, además de disponer de un aparcamiento reservado para el personal sanitario y la ambulancia.

El espacio se distribuye en tres plantas. En la baja se concentran las consultas, mientras que en la primera se ha habilitado un apartamento para los profesionales de guardia y el servicio de atención continuada, con dos habitaciones con baño y una sala de estar, que servirá como comedor. Dispone también de una pequeña cocina.

En la planta semisótano se situarán un almacén, un espacio abierto para los vehículos de los profesionales y la caldera de pellets, que utiliza materiales renovables como combustible y tiene un coste de suministro tres veces inferior. El edificio ha conseguido la calificación energética A, la más alta en una escala de siete tramos.

El Gobierno de Asturias sigue avanzando en el objetivo de acercar los servicios sanitarios a los ciudadanos y garantizar la equidad en el acceso a las prestaciones a través de una amplia red de infraestructuras dotadas con la tecnología y el equipamiento adecuados. Mantiene, además, su compromiso de continuar desarrollando inversiones que permiten mejorar las condiciones de vida en la zona rural y eliminar las diferencias con el centro de la comunidad.

El consultorio local de Villayón abrirá al público en otoño

Dispone de cuatro consultas médicas, sala de espera y área para extracciones, además de un apartamento en la parte superior para los profesionales de guardia

VILLAYÓN

17 julio 2016
09:34

Las obras del nuevo consultorio médico de Villayón ya están finalizadas. La Consejería de Sanidad anunció ayer que entrará en funcionamiento el próximo otoño, una vez finalice su equipamiento. El nuevo centro está ubicado en una parcela de casi mil metros cuadrados, cedida por el Ayuntamiento. Dispone de cuatro consultas médicas, sala de espera y área para extracciones, además de un apartamento en la parte superior para los profesionales de guardia.

Las obras, financiadas con fondos Feder han supuesto una inversión de 677.856 euros. El centro presta servicio a una población de 1.226 personas y atiende anualmente alrededor de 8.000 consultas de medicina y 4.600 de enfermería.

PUBLICIDAD

PUBLICIDAD



An advertisement lasting one week was inserted on the front page of La Nueva España digital newspaper.

Transición 1



Transición 2



- **The action incorporates innovative elements:**

The construction of the health centre has taken into account the inclusion of innovative elements, highlighting the use of new information technologies that make it possible to offer higher quality health services due to faster and better information communication.

Emphasis should be placed on the fact the new facilities solve accessibility problems by concentrating the basic health care activities on the ground floor.

On the other hand, a pellet boiler using renewable materials as fuel, was installed in the basement, thus providing the advantages of caring for the environment, lower fuel costs and a better performance. Pellet boiler supply costs are one-third of those for other types of boiler. The building attained the highest energy rating (A) proving maximum energy efficiency.

- **Adaptation of the results obtained to the objectives set:**

The action, included in the ERDF Operational Programme for Asturias 2014-2020, contributes towards guaranteeing the continuity and permanence of the inhabitants in a rural area currently threatened by depopulation, as investment in health care infrastructures in rural areas has a direct influence on maintaining their population and on balanced territorial development.



The value added by the construction of the health centre in this area involves guaranteeing one of the most important and highly valued social services for the population, i.e. the right to health and to top quality healthcare services, and for it to efficiently reach all municipalities of the Asturian territory.

- **Contribution towards resolving a regional problem or weakness detected:**

The construction and later posterior opening of the new health centre, meant a healthcare breakthrough in such a complicated mountainous area. This implies a considerable primary healthcare delivery improvement in an area of this region that showed great deficiencies and required big changes.



- **High degree of coverage regarding its target population:**

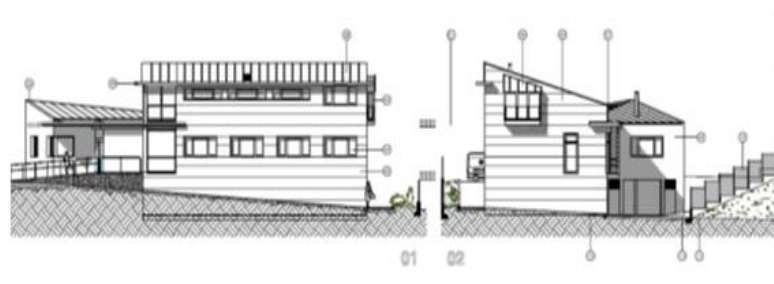
The Government of the Principality of Asturias continues advancing in its objective to bring healthcare services closer to citizens while guaranteeing equity in the access to these, for which reason this action manages to consolidate the spirit of improvement in primary healthcare such as providing universal essential healthcare coverage.

- **Horizontal criteria consideration for equal opportunities and environmental sustainability:**

Equal opportunity criteria have been taken into account when facilitating access to these social infrastructures to all the population, leading to the elimination of architectural barriers to allow for easy and convenient access of people with disabilities or reduced mobility.



On the other hand, gender equality is also respected, contributing towards improving the quality of life of women in the sense priority is given to the service proximity to counter geographic dispersion and remoteness, helping women reconcile the development of their professional work and their family responsibilities.



With regard to the inclusion of environmental sustainability criteria, it should be highlighted that closer health centres allow for the use of more sustainable means of transport to access such healthcare facilities, thus reducing the emissions into the environment.

- **Synergies with other public intervention policies or instruments:**

The action provides synergies with other public policies forming part of the healthcare infrastructure policy, through the improvement in resources, while also with the territorial planning policy and rural development.

