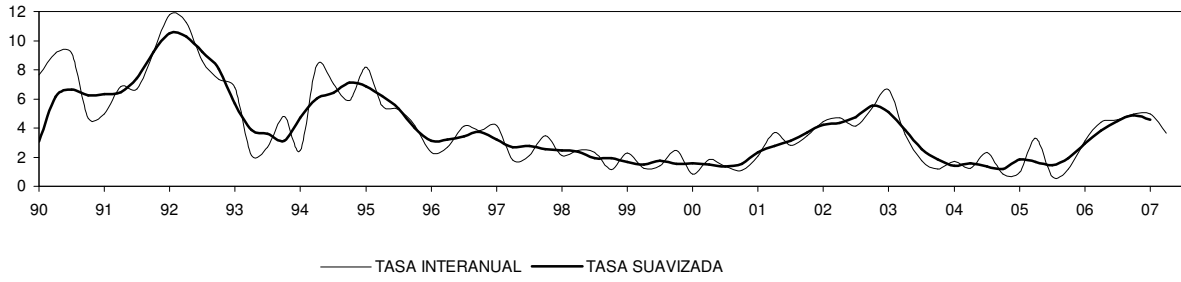
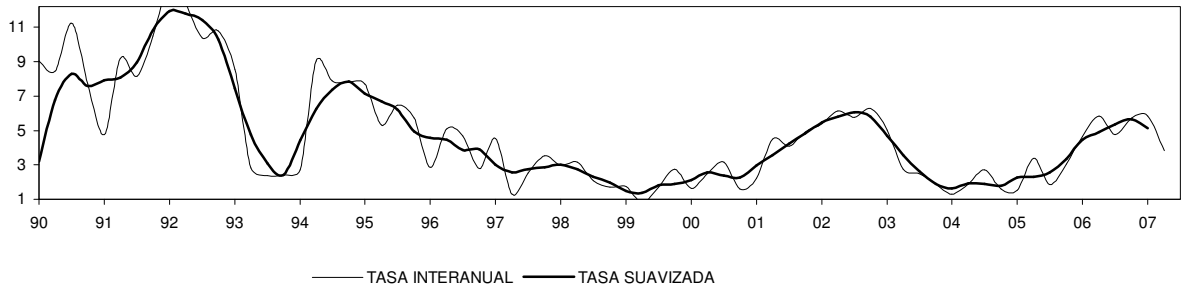


ANDALUCÍA

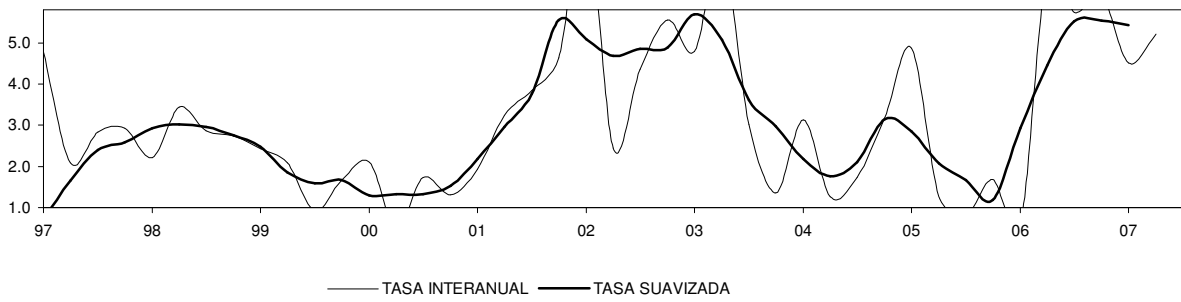
COSTE SALARIAL TOTAL POR TRABAJADOR Y MES



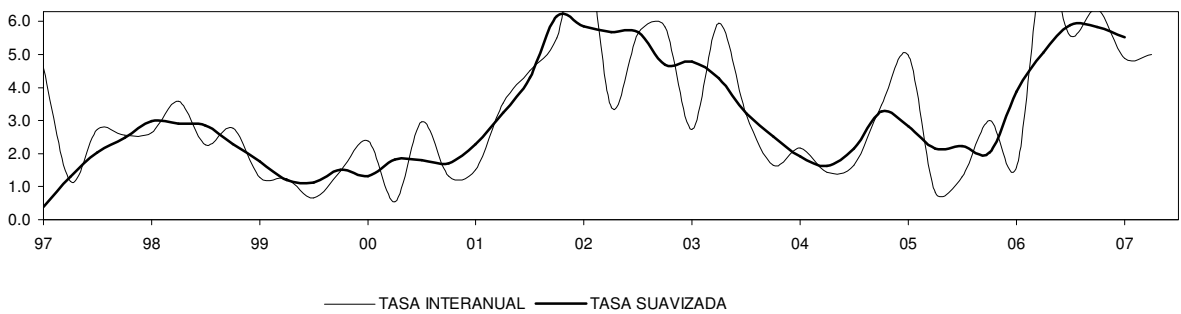
COSTE SALARIAL ORDINARIO POR TRABAJADOR Y MES



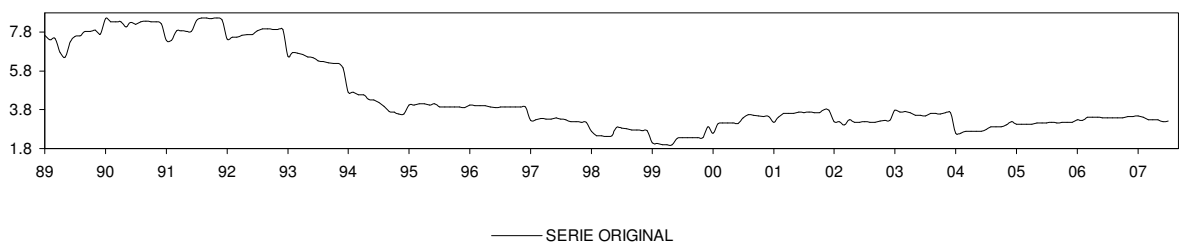
COSTE SALARIAL TOTAL POR HORA EFECTIVA DE TRABAJO



COSTE SALARIAL ORDINARIO POR HORA EFECTIVA DE TRABAJO

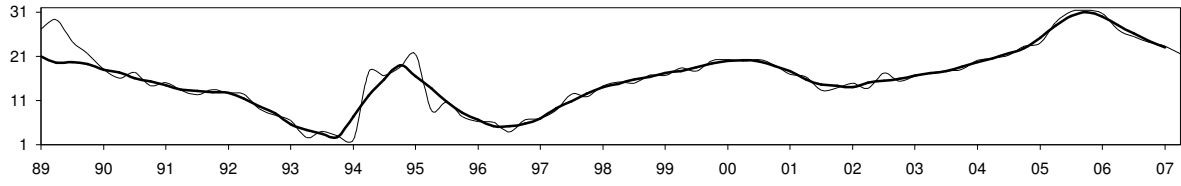


INCREMENTO SALARIAL REVISADO. TOTAL

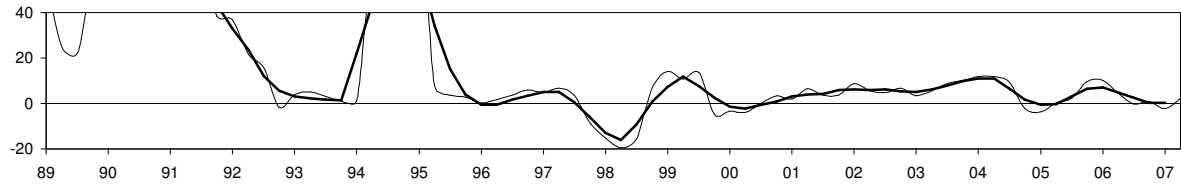


ANDALUCÍA

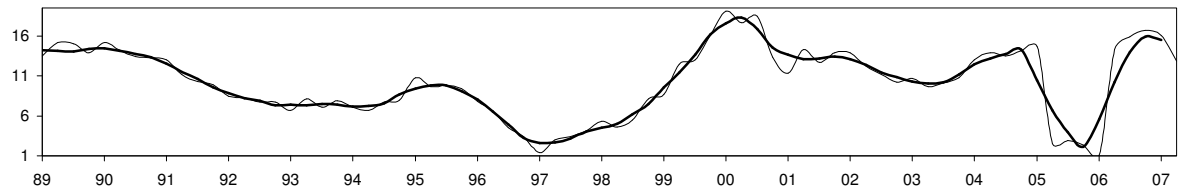
CRÉDITOS AL SECTOR PRIVADO



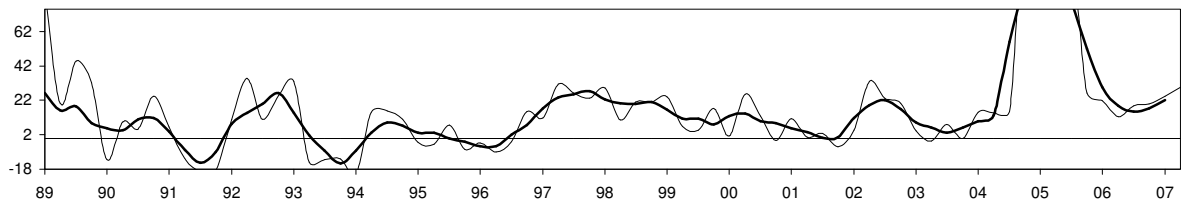
CRÉDITOS AL SECTOR PÚBLICO



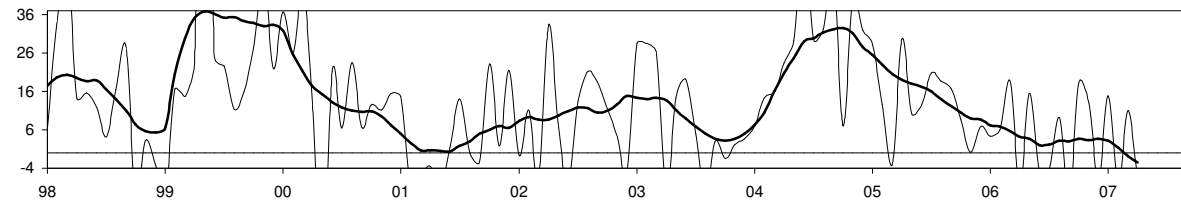
DEPÓSITOS DEL SECTOR PRIVADO



DEPÓSITOS DEL SECTOR PÚBLICO



HIPOTECAS INMOBILIARIAS: NÚMERO



HIPOTECAS INMOBILIARIAS: IMPORTE

